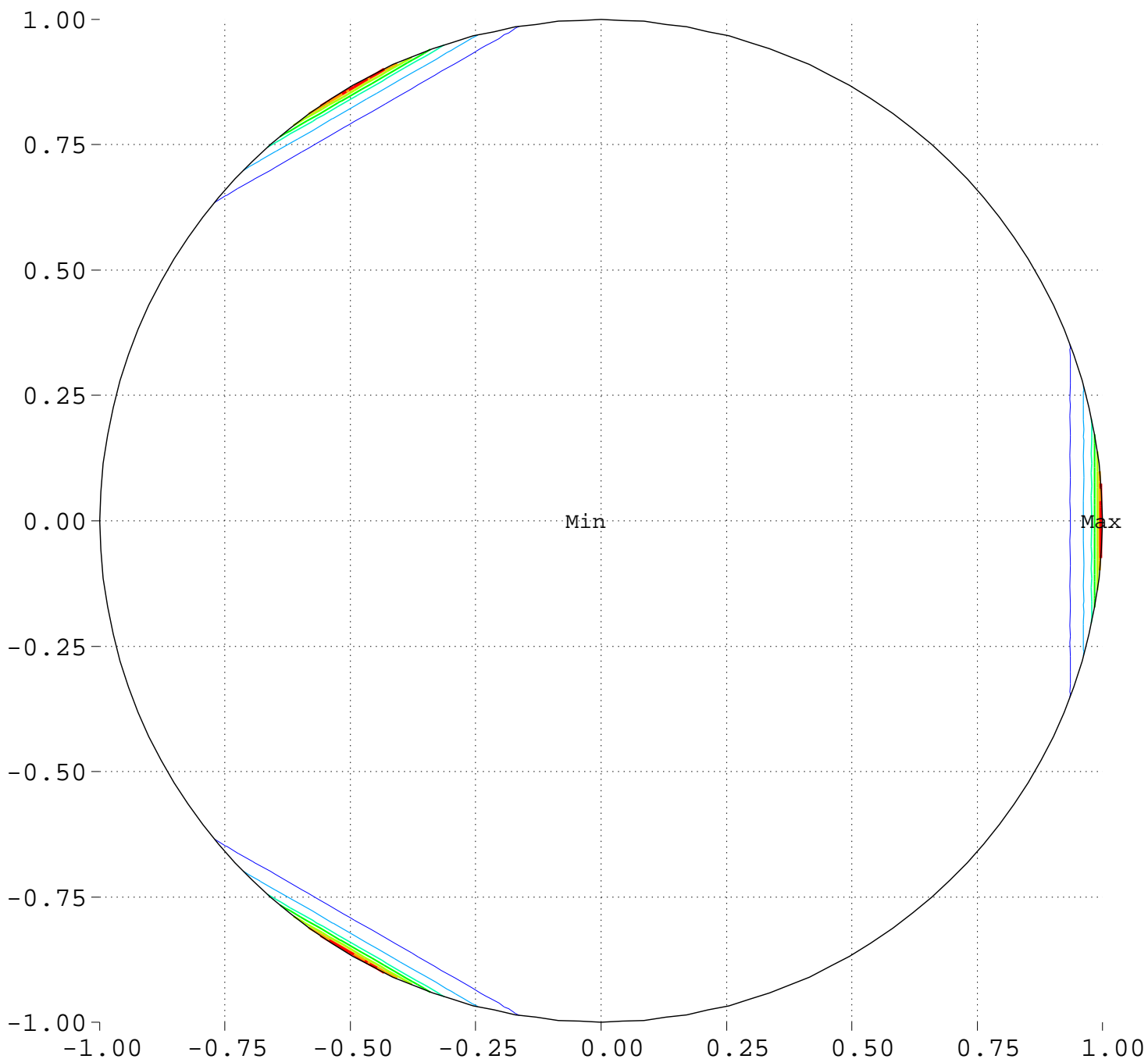


# Minimize Maximum Intensity for 3 Sources Source Locations

North Pole, 0 Deg = Right, 90 Deg = Top



Minimum = 0.00      Maximum = 100.00

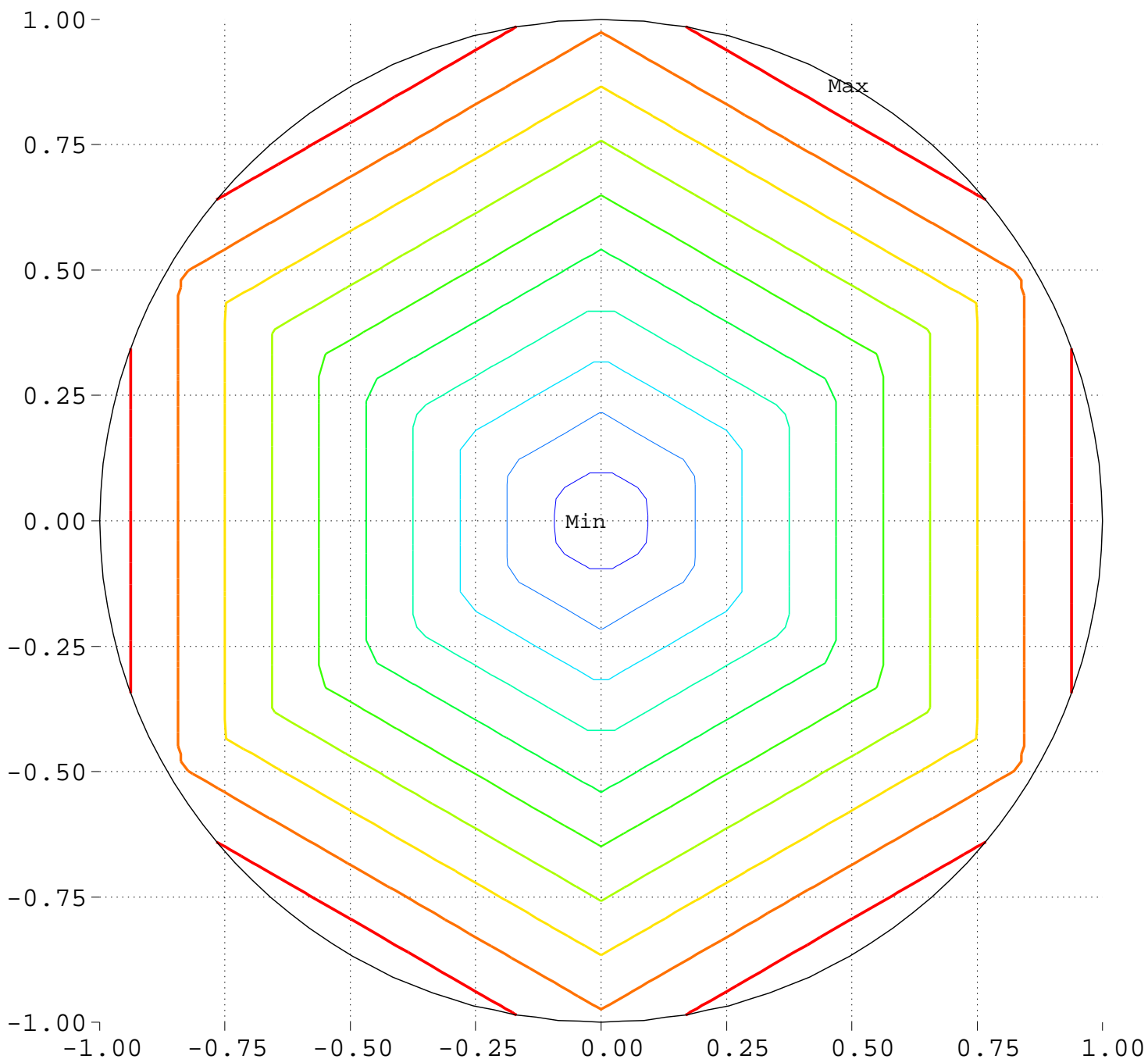
Contours around Nadirs of Sources

20.0000    40.0000    60.0000    70.0000    80.0000  
90.0000    95.0000

# Minimize Maximum Intensity for 3 Sources

Highest Intensity: 1.000000

North Pole, 0 Deg = Right, 90 Deg = Top



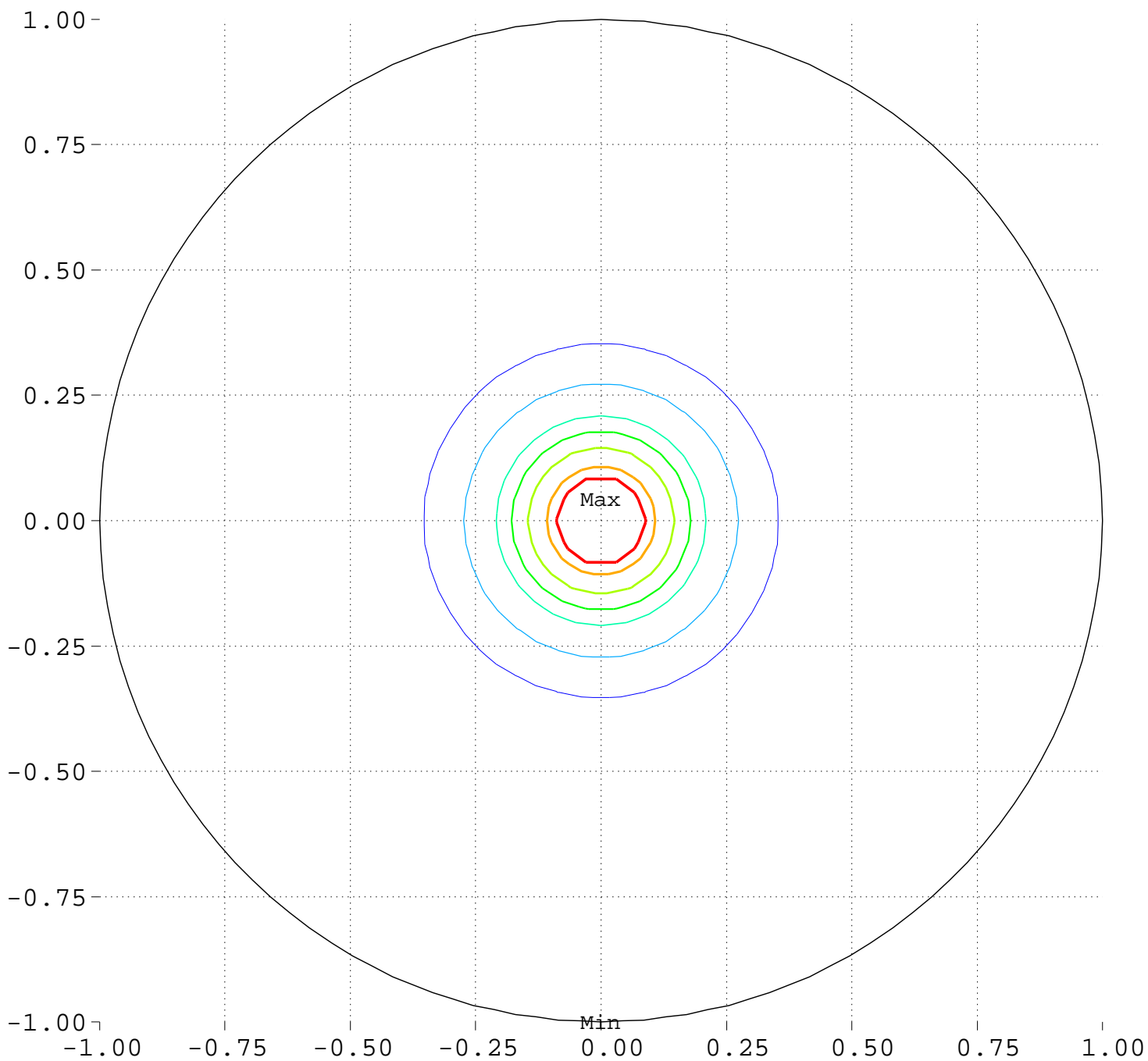
Minimum = 3.84      Maximum = 133.29

Contour Levels of Scaled Intensity

<u>12.5000</u>	<u>25.0000</u>	<u>37.5000</u>	<u>50.0000</u>	<u>62.5000</u>
<u>75.0000</u>	<u>87.5000</u>	<u>100.0000</u>	<u>112.5000</u>	<u>125.0000</u>

# Minimize Maximum Intensity for 3 Sources Source Locations

Equator View, Longitude 0 Deg



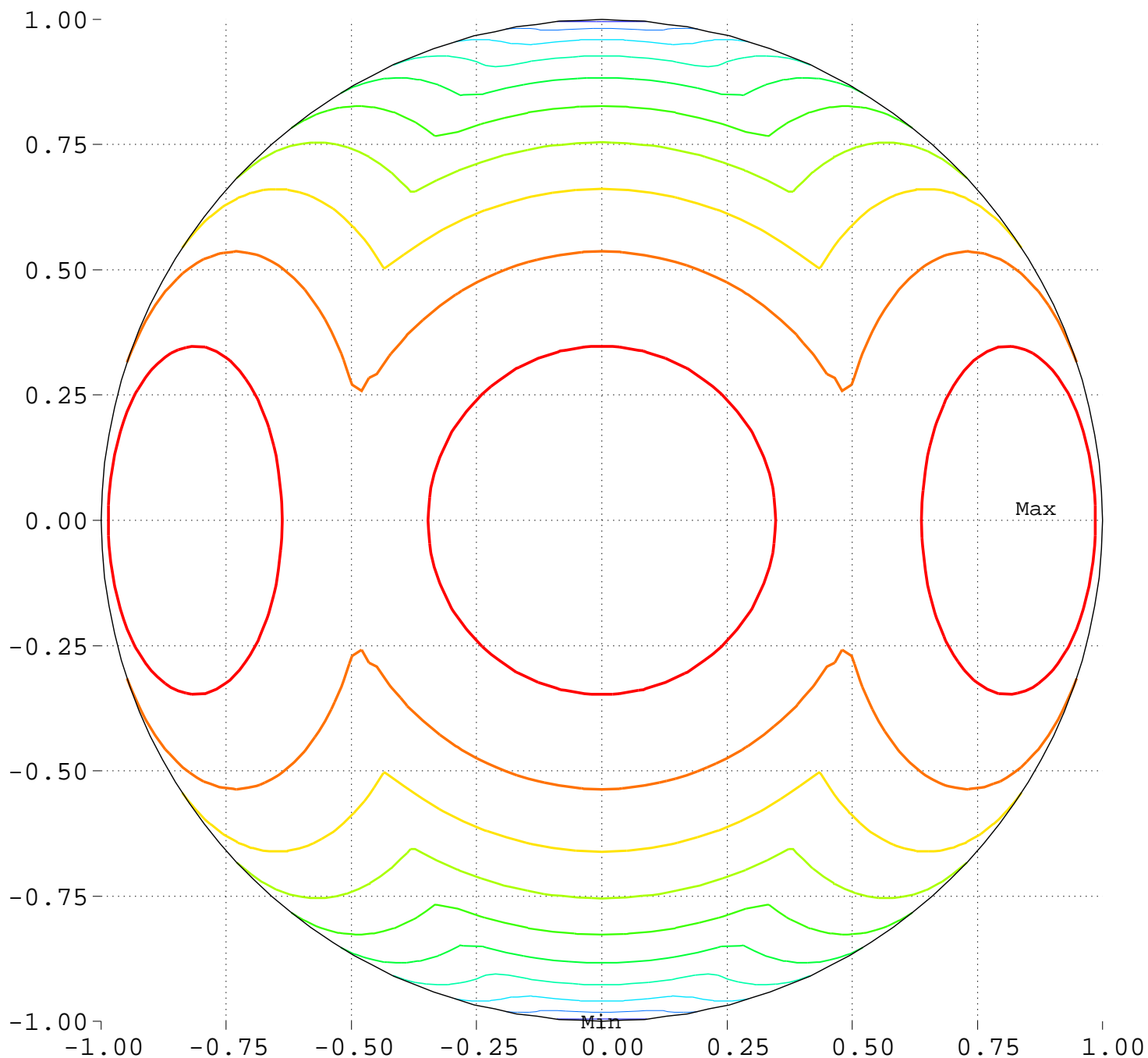
Minimum = 0.00      Maximum = 100.00

Contours around Nadirs of Sources

20.0000    40.0000    60.0000    70.0000    80.0000  
90.0000    95.0000

Minimize Maximum Intensity for 3 Sources  
Highest Intensity: 1.000000

Equator View, Longitude 0 Deg



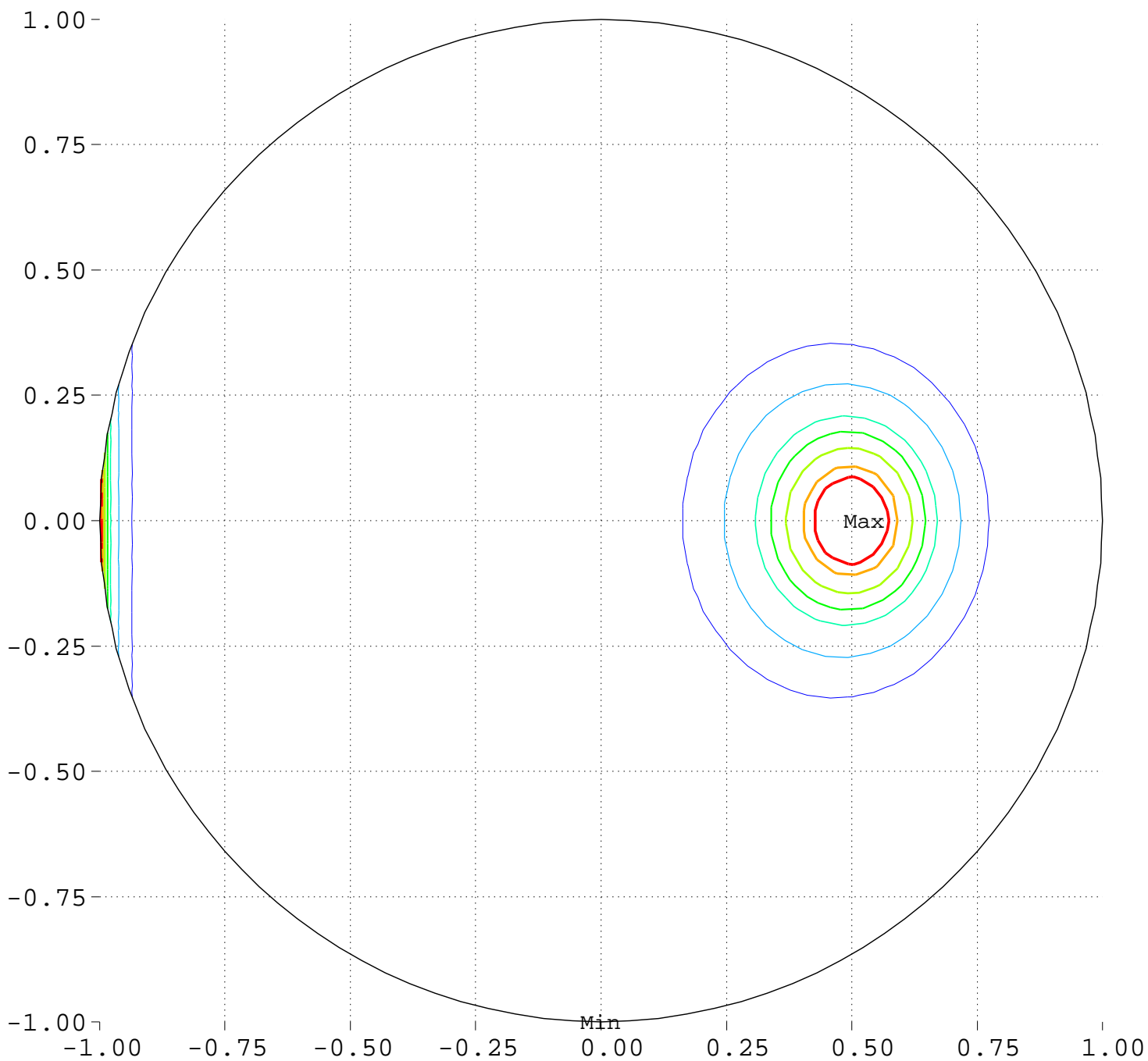
Minimum = 3.84      Maximum = 133.29

Contour Levels of Scaled Intensity

<u>12.5000</u>	<u>25.0000</u>	<u>37.5000</u>	<u>50.0000</u>	<u>62.5000</u>
<u>75.0000</u>	<u>87.5000</u>	<u>100.0000</u>	<u>112.5000</u>	<u>125.0000</u>

# Minimize Maximum Intensity for 3 Sources Source Locations

Equator View, Longitude 90 Deg



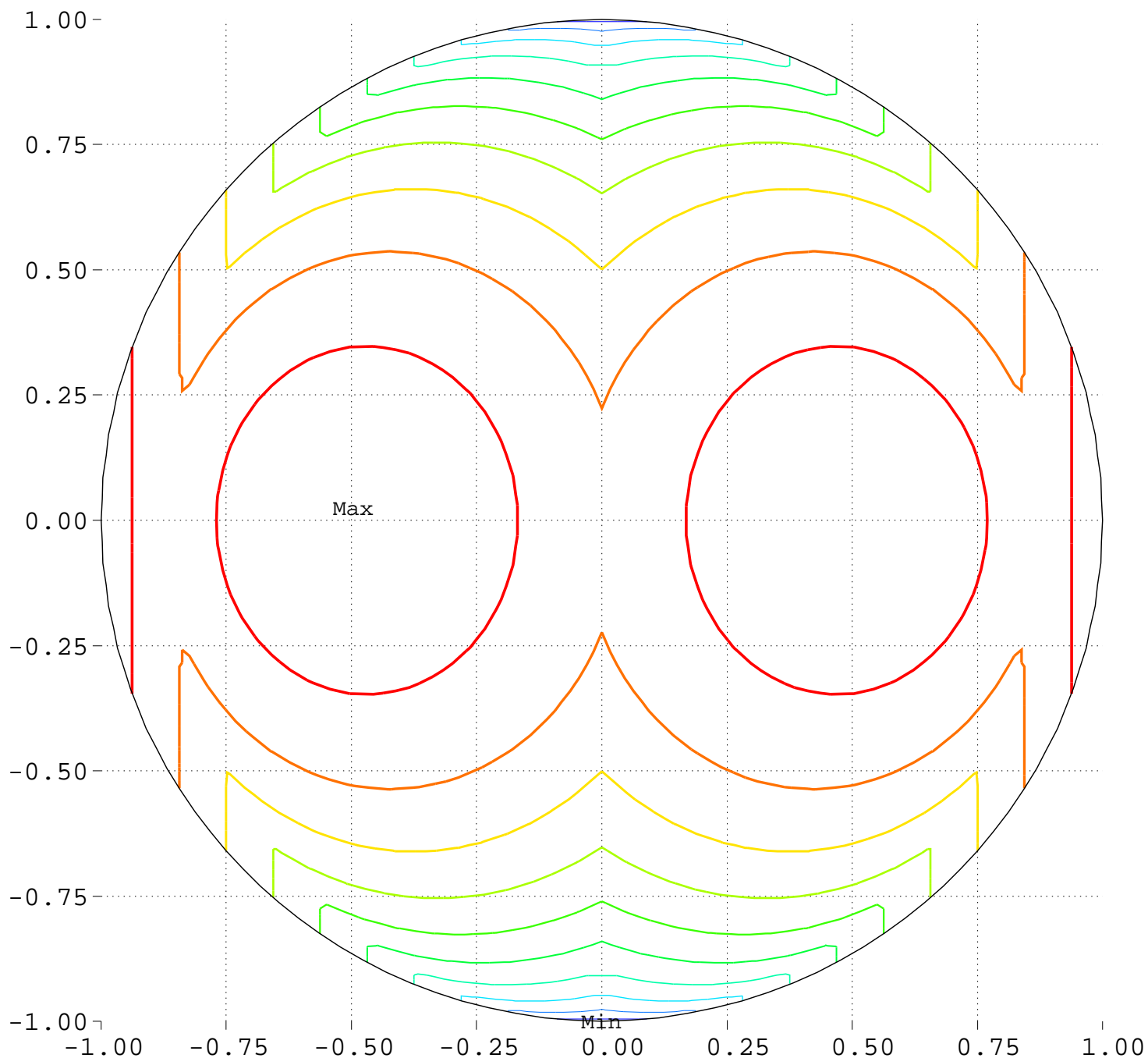
Minimum = 0.00      Maximum = 100.00

Contours around Nadirs of Sources

20.0000    40.0000    60.0000    70.0000    80.0000  
90.0000    95.0000

Minimize Maximum Intensity for 3 Sources  
Highest Intensity: 1.000000

Equator View, Longitude 90 Deg



Minimum = 4.95      Maximum = 133.29

Contour Levels of Scaled Intensity

<u>12.5000</u>	<u>25.0000</u>	<u>37.5000</u>	<u>50.0000</u>	<u>62.5000</u>
<u>75.0000</u>	<u>87.5000</u>	<u>100.0000</u>	<u>112.5000</u>	<u>125.0000</u>