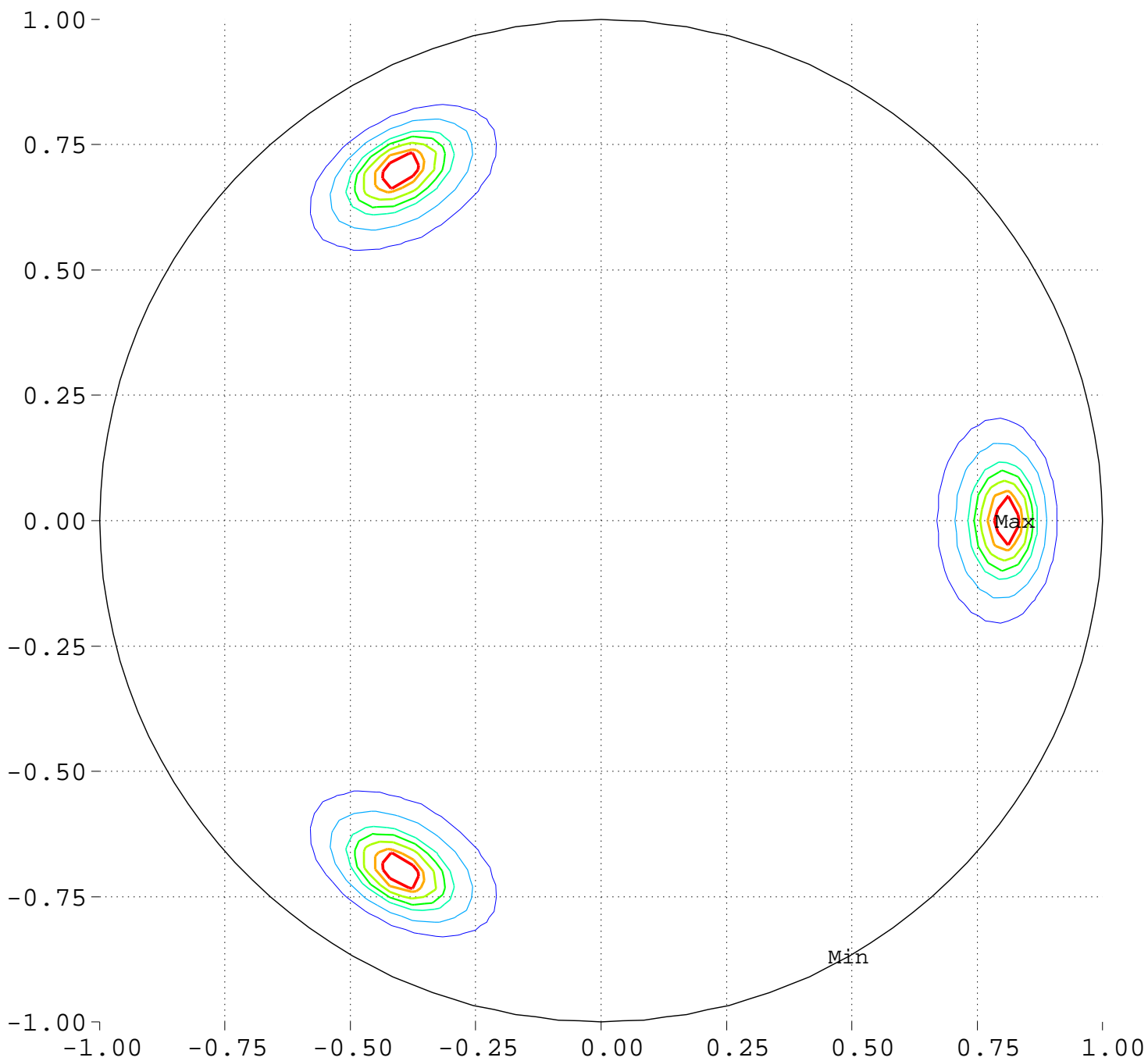


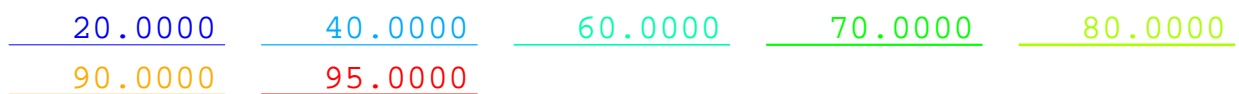
# Maximize Minimum Intensity for 6 Sources Source Locations

North Pole, 0 Deg = Right, 90 Deg = Top



Minimum = 0.00      Maximum = 100.00

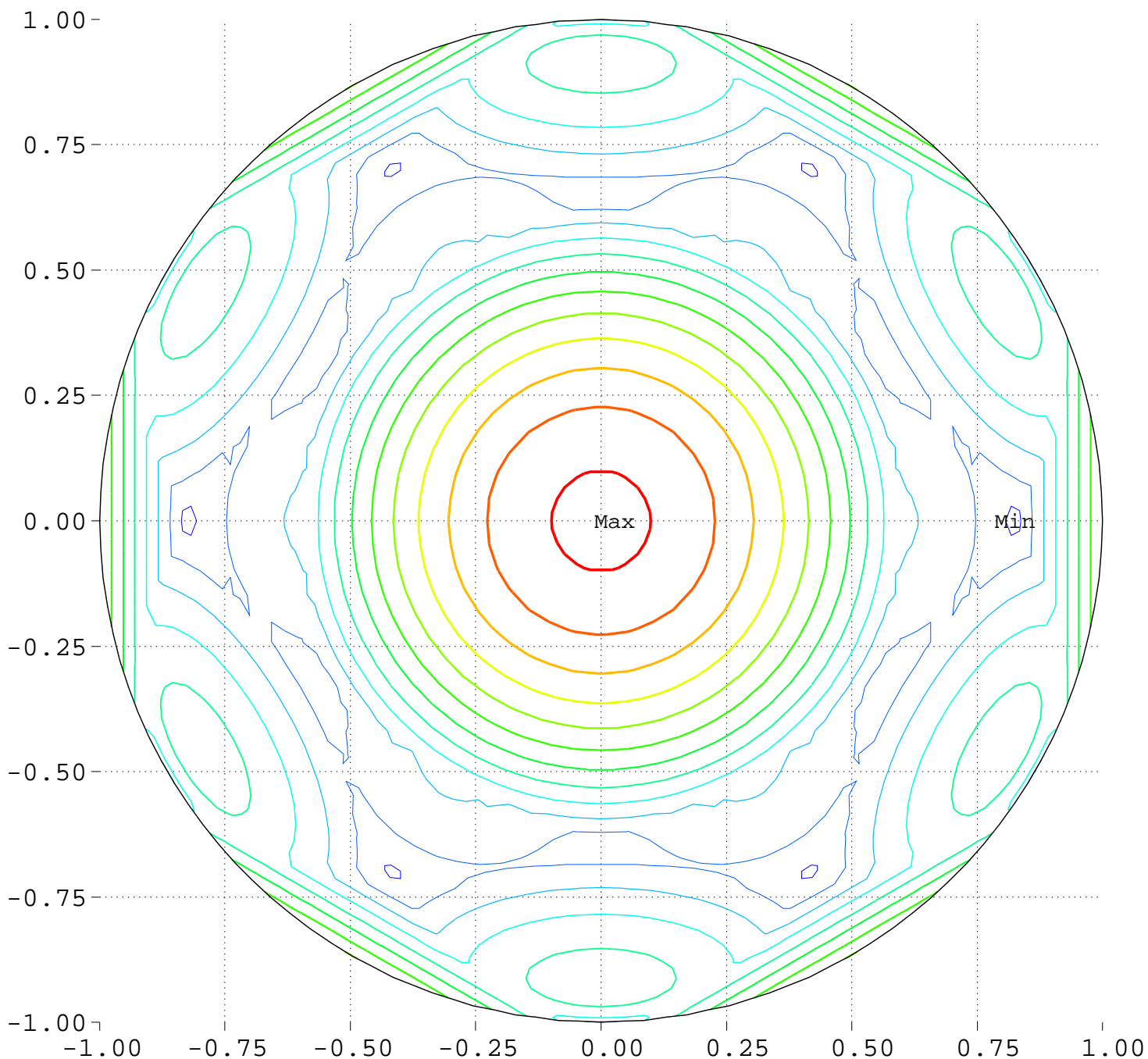
Contours around Nadirs of Sources



# Maximize Minimum Intensity for 6 Sources

Lowest Intensity: 1.334071

North Pole, 0 Deg = Right, 90 Deg = Top



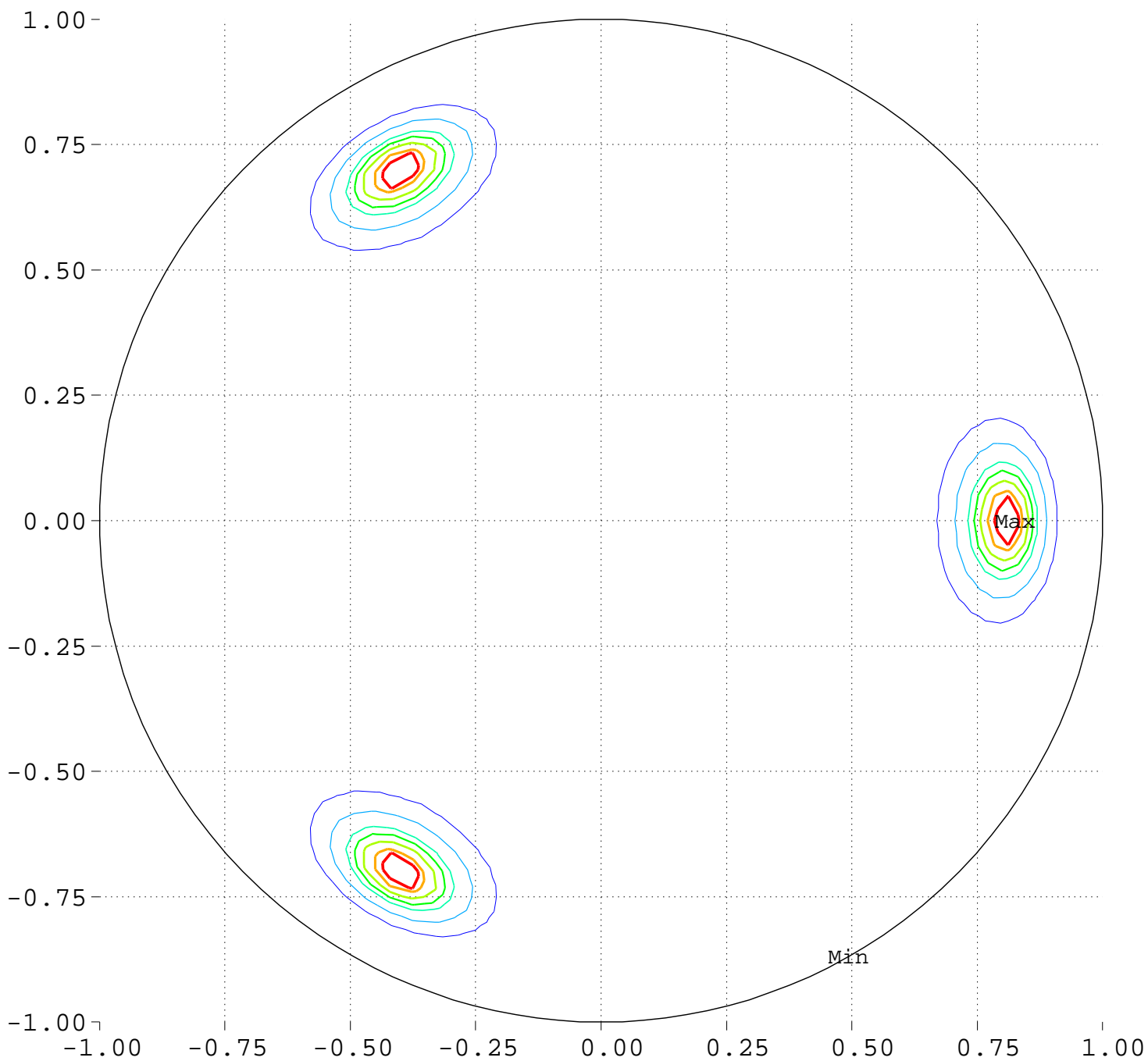
Minimum = 88.97      Maximum = 118.07

Contour Levels of Scaled Intensity

<u>90.0000</u>	<u>92.5000</u>	<u>95.0000</u>	<u>97.5000</u>	<u>100.0000</u>
<u>102.5000</u>	<u>105.0000</u>	<u>107.5000</u>	<u>110.0000</u>	<u>112.5000</u>
<u>115.0000</u>	<u>117.5000</u>			

# Maximize Minimum Intensity for 6 Sources Source Locations

South Pole, 0 Deg = Right, 270 Deg = Top



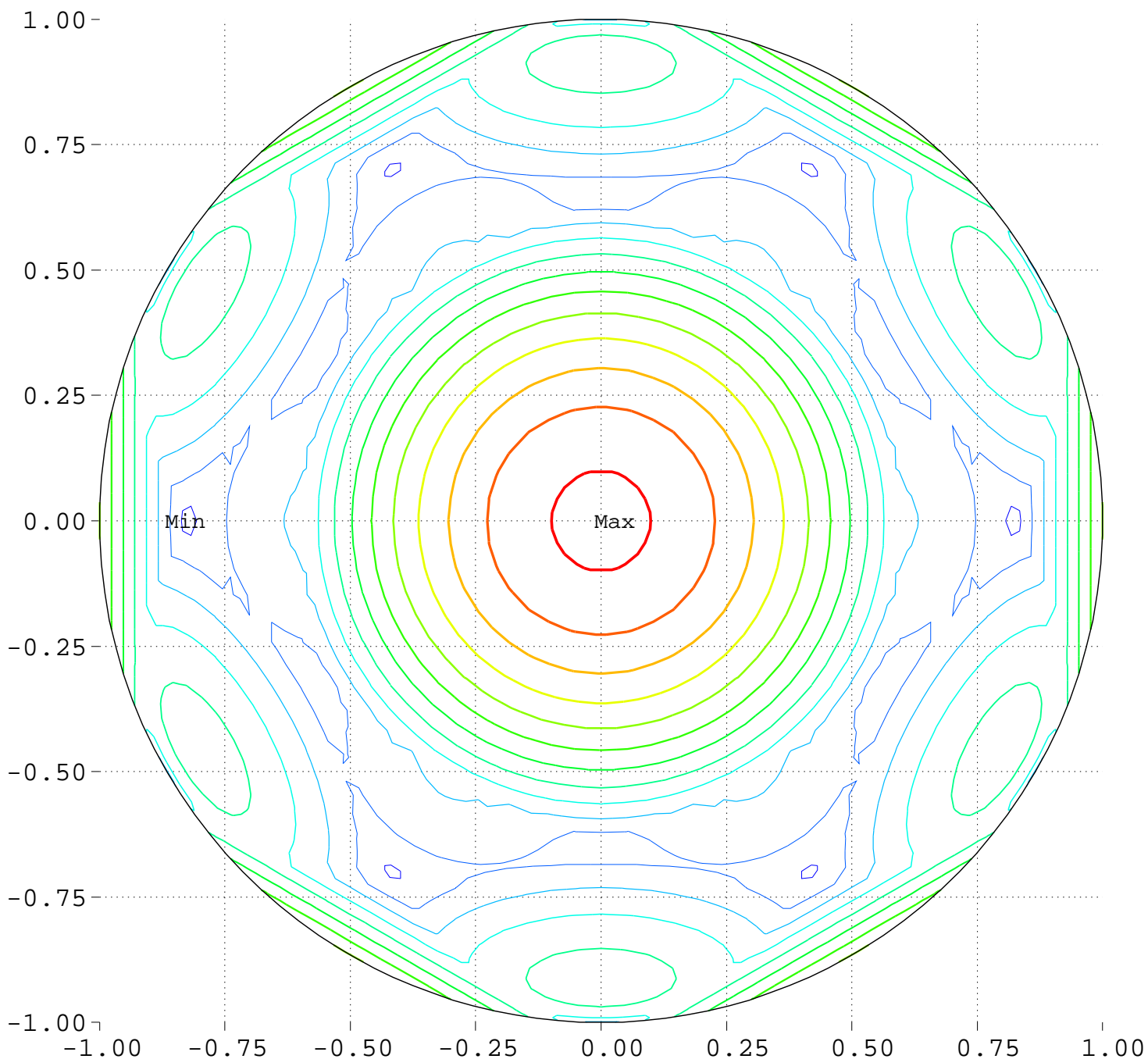
Minimum = 0.00      Maximum = 100.00

Contours around Nadirs of Sources



Maximize Minimum Intensity for 6 Sources  
Lowest Intensity: 1.334071

South Pole, 0 Deg = Right, 270 Deg = Top



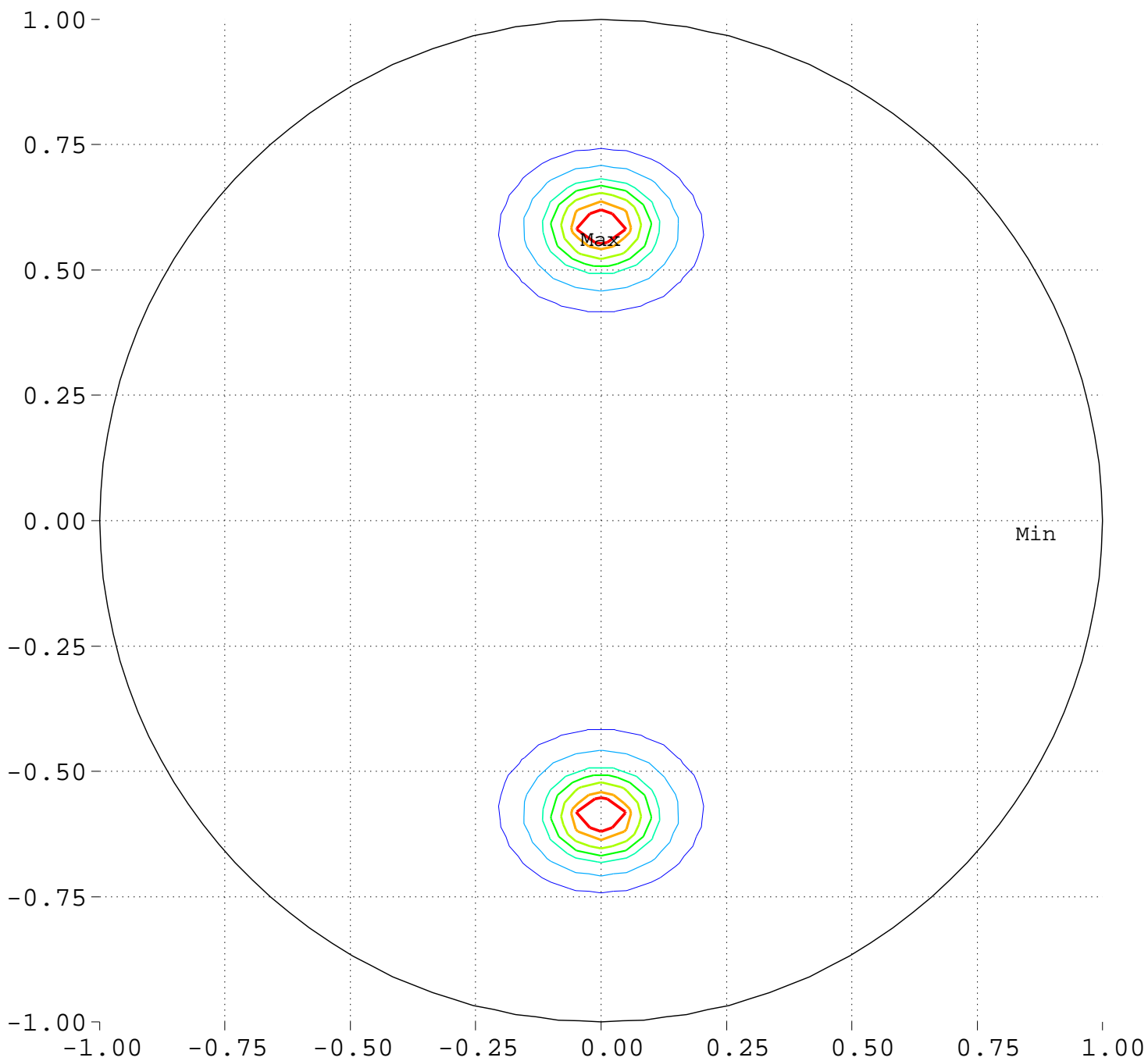
Minimum = 88.97      Maximum = 118.07

Contour Levels of Scaled Intensity

<u>90.0000</u>	<u>92.5000</u>	<u>95.0000</u>	<u>97.5000</u>	<u>100.0000</u>
<u>102.5000</u>	<u>105.0000</u>	<u>107.5000</u>	<u>110.0000</u>	<u>112.5000</u>
<u>115.0000</u>	<u>117.5000</u>			

# Maximize Minimum Intensity for 6 Sources Source Locations

Equator View, Longitude 0 Deg



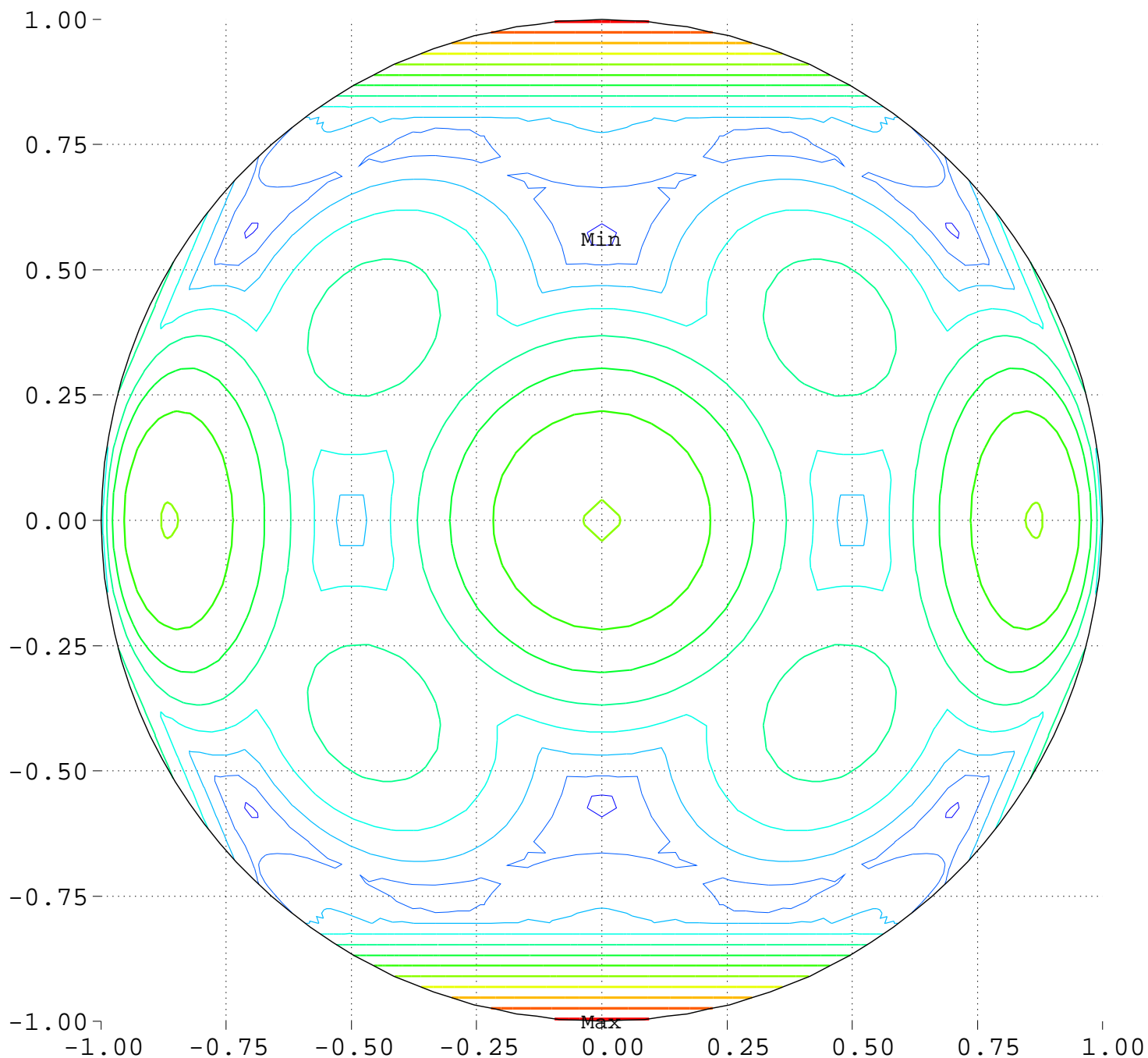
Minimum = 0.00      Maximum = 100.00

Contours around Nadirs of Sources

20.0000    40.0000    60.0000    70.0000    80.0000  
90.0000    95.0000

Maximize Minimum Intensity for 6 Sources  
Lowest Intensity: 1.334071

Equator View, Longitude 0 Deg



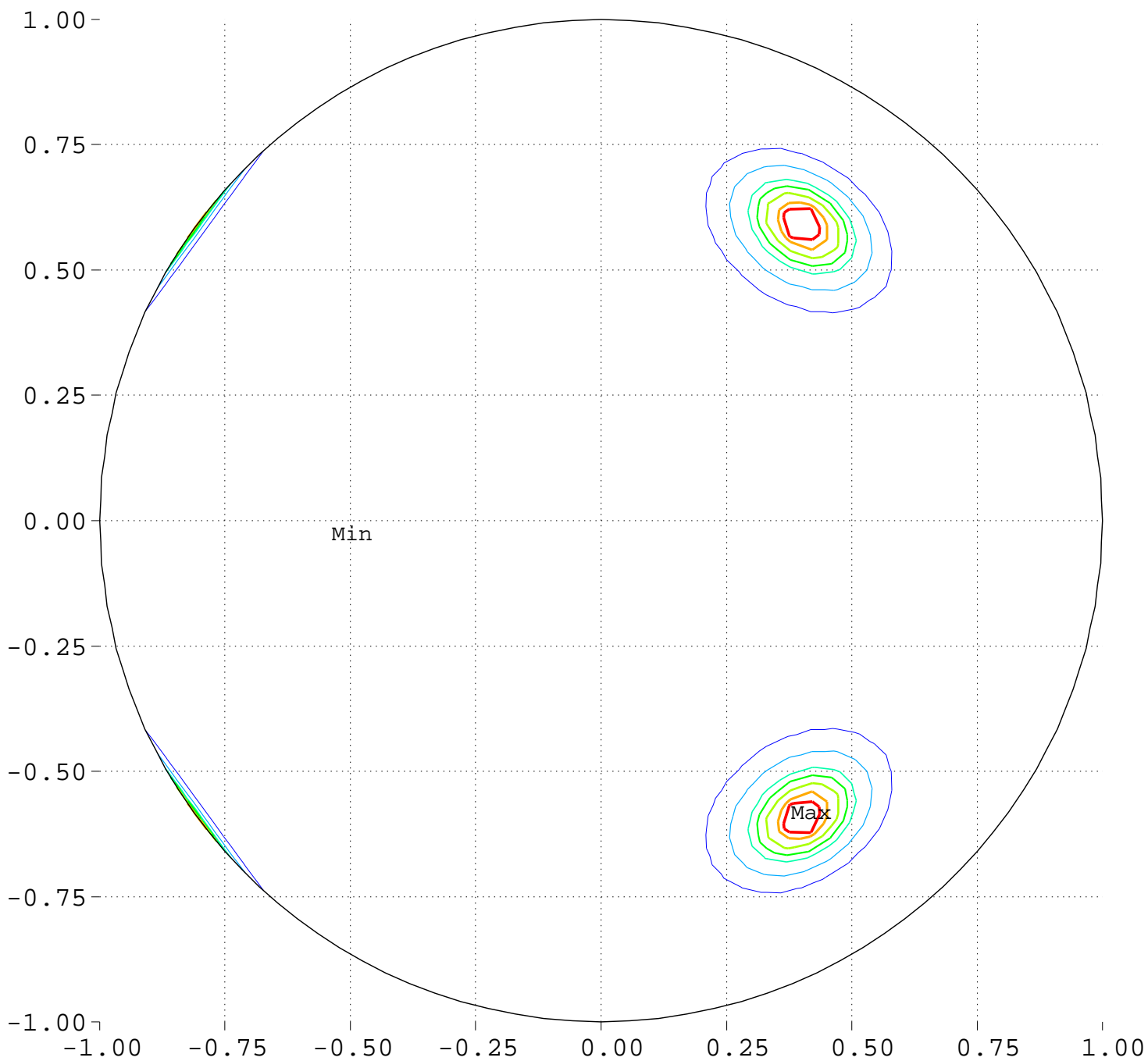
Minimum = 88.97      Maximum = 118.07

Contour Levels of Scaled Intensity

<u>90.0000</u>	<u>92.5000</u>	<u>95.0000</u>	<u>97.5000</u>	<u>100.0000</u>
<u>102.5000</u>	<u>105.0000</u>	<u>107.5000</u>	<u>110.0000</u>	<u>112.5000</u>
<u>115.0000</u>	<u>117.5000</u>			

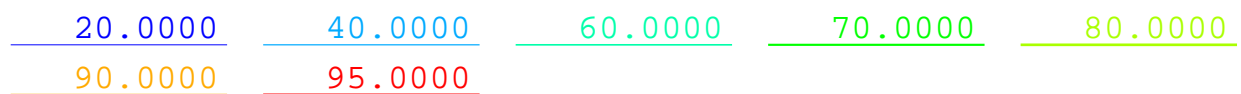
# Maximize Minimum Intensity for 6 Sources Source Locations

Equator View, Longitude 90 Deg



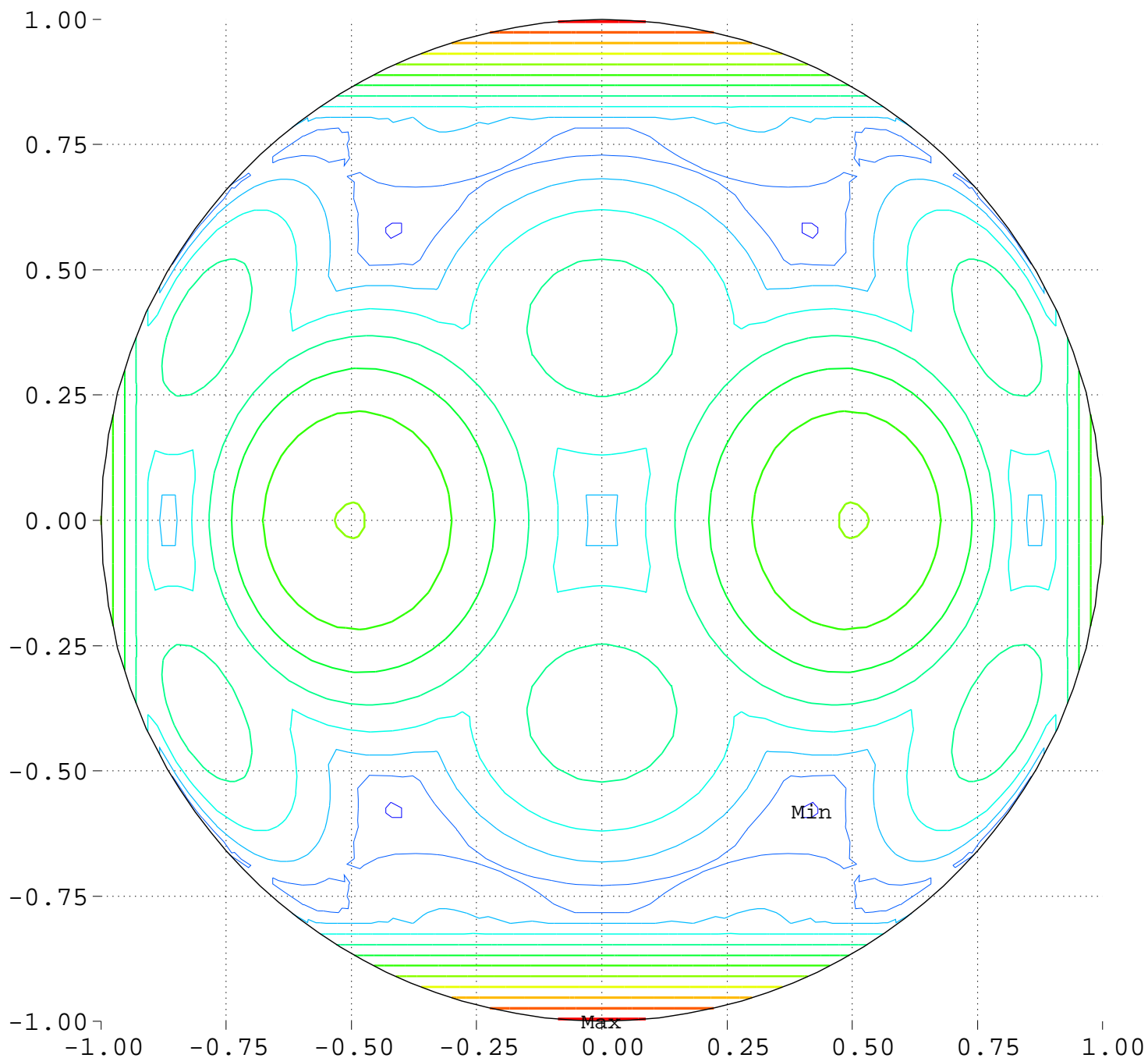
Minimum = 0.00      Maximum = 100.00

Contours around Nadirs of Sources



Maximize Minimum Intensity for 6 Sources  
Lowest Intensity: 1.334071

Equator View, Longitude 90 Deg



Minimum = 89.52      Maximum = 118.01

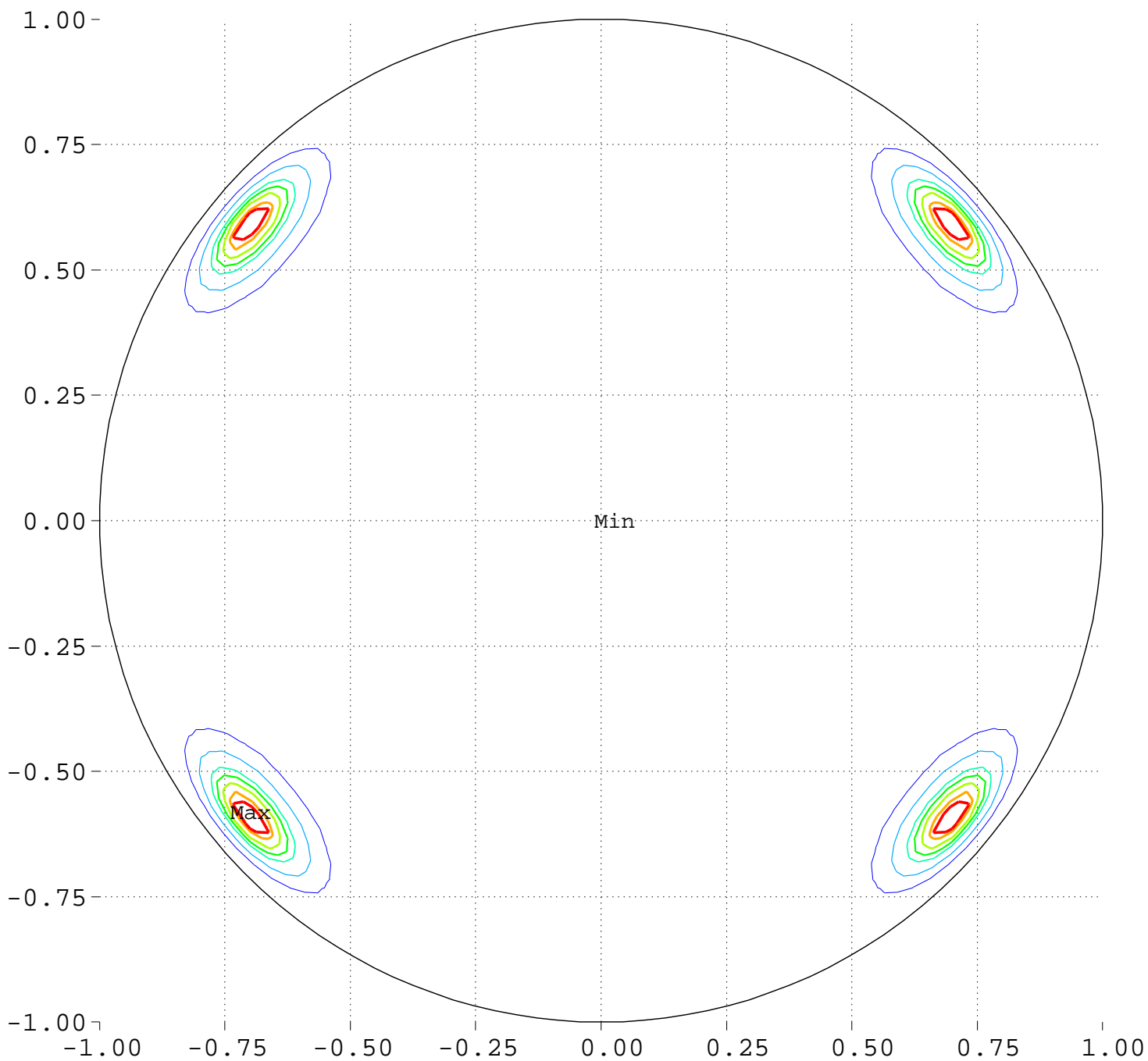
Contour Levels of Scaled Intensity

<u>90.0000</u>	<u>92.5000</u>	<u>95.0000</u>	<u>97.5000</u>	<u>100.0000</u>
<u>102.5000</u>	<u>105.0000</u>	<u>107.5000</u>	<u>110.0000</u>	<u>112.5000</u>
<u>115.0000</u>	<u>117.5000</u>			



# Maximize Minimum Intensity for 6 Sources Source Locations

Equator View, Longitude 180 Deg



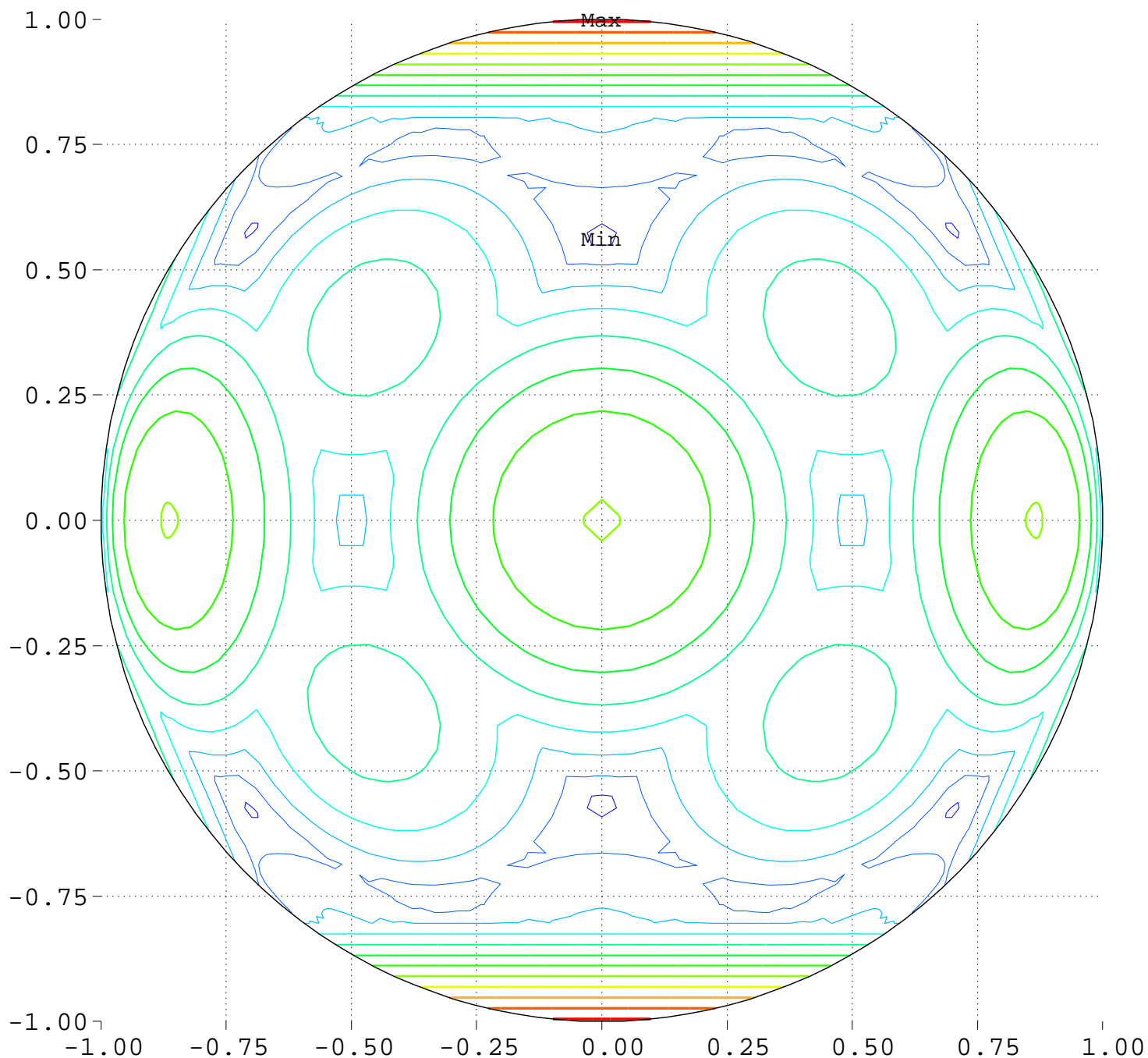
Minimum = 0.00      Maximum = 100.00

Contours around Nadirs of Sources

20.0000    40.0000    60.0000    70.0000    80.0000  
90.0000    95.0000

Maximize Minimum Intensity for 6 Sources  
Lowest Intensity: 1.334071

Equator View, Longitude 180 Deg



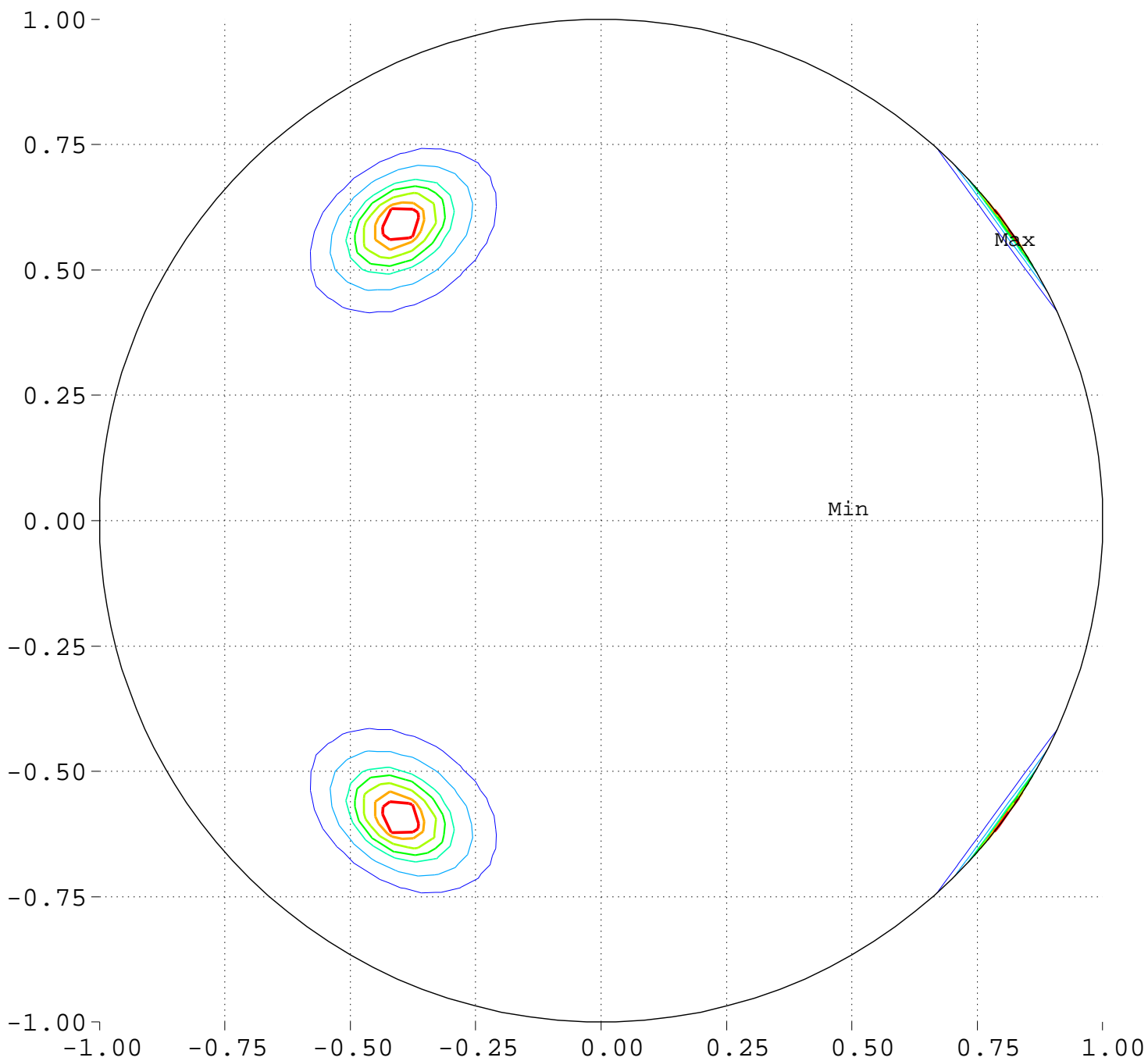
Minimum = 88.97      Maximum = 118.07

Contour Levels of Scaled Intensity

<u>90.0000</u>	<u>92.5000</u>	<u>95.0000</u>	<u>97.5000</u>	<u>100.0000</u>
<u>102.5000</u>	<u>105.0000</u>	<u>107.5000</u>	<u>110.0000</u>	<u>112.5000</u>
<u>115.0000</u>	<u>117.5000</u>			

# Maximize Minimum Intensity for 6 Sources Source Locations

Equator View, Longitude 270 Deg



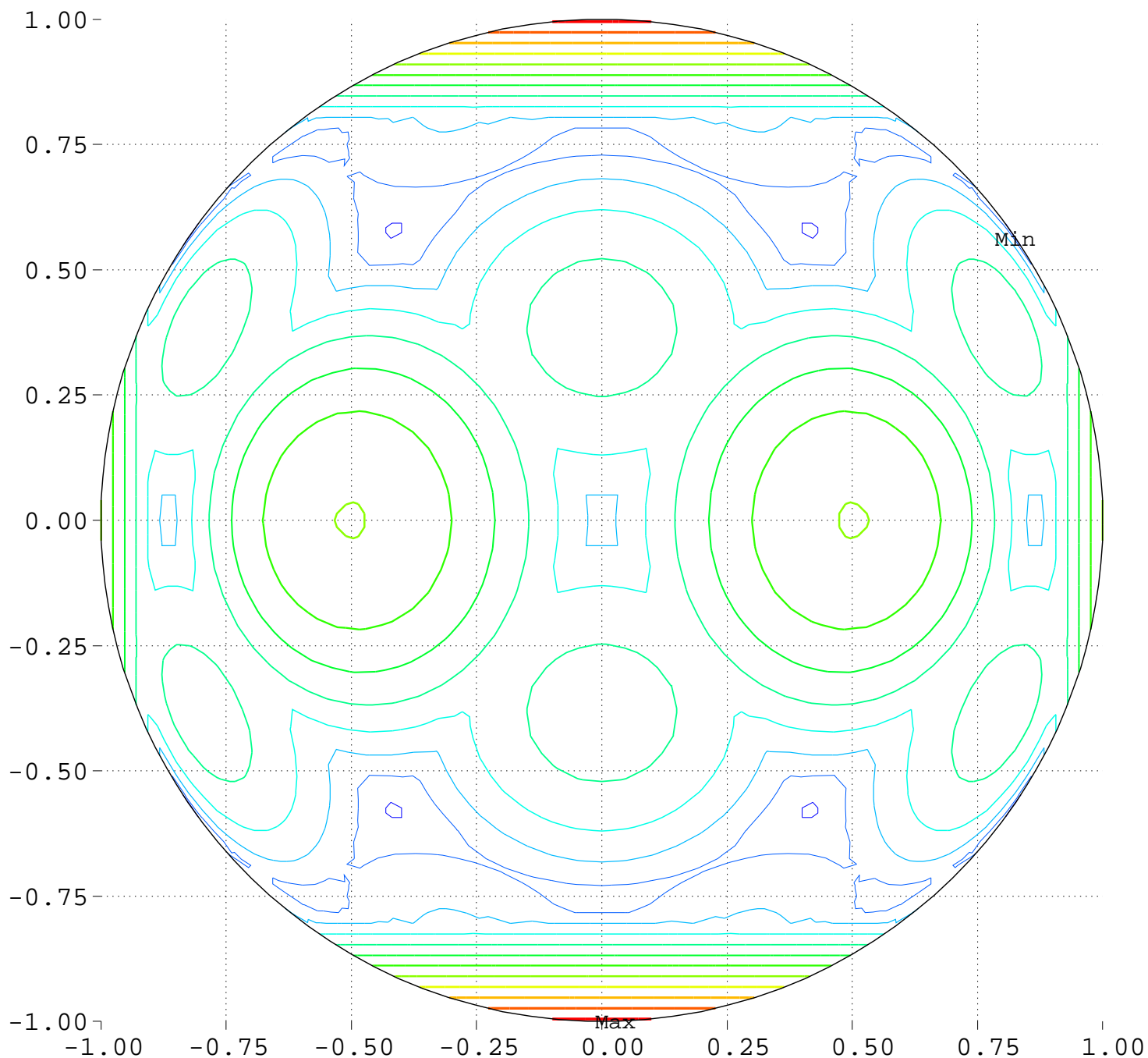
Minimum = 0.00      Maximum = 100.00

Contours around Nadirs of Sources



Maximize Minimum Intensity for 6 Sources  
Lowest Intensity: 1.334071

Equator View, Longitude 270 Deg



Minimum = 88.97      Maximum = 118.07

Contour Levels of Scaled Intensity

<u>90.0000</u>	<u>92.5000</u>	<u>95.0000</u>	<u>97.5000</u>	<u>100.0000</u>
<u>102.5000</u>	<u>105.0000</u>	<u>107.5000</u>	<u>110.0000</u>	<u>112.5000</u>
<u>115.0000</u>	<u>117.5000</u>			