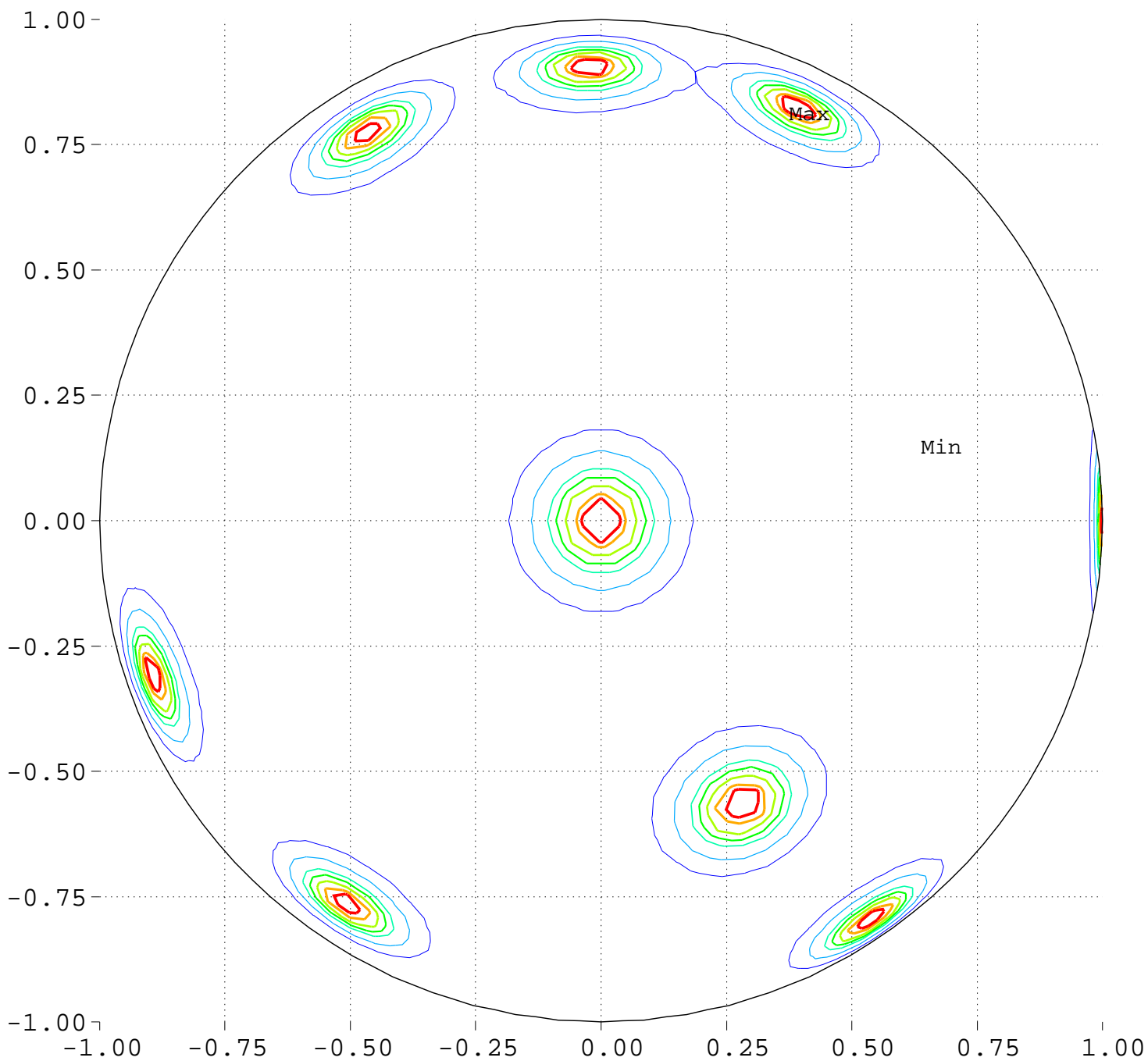


# Minimize Maximum Intensity for 16 Sources Source Locations

North Pole, 0 Deg = Right, 90 Deg = Top



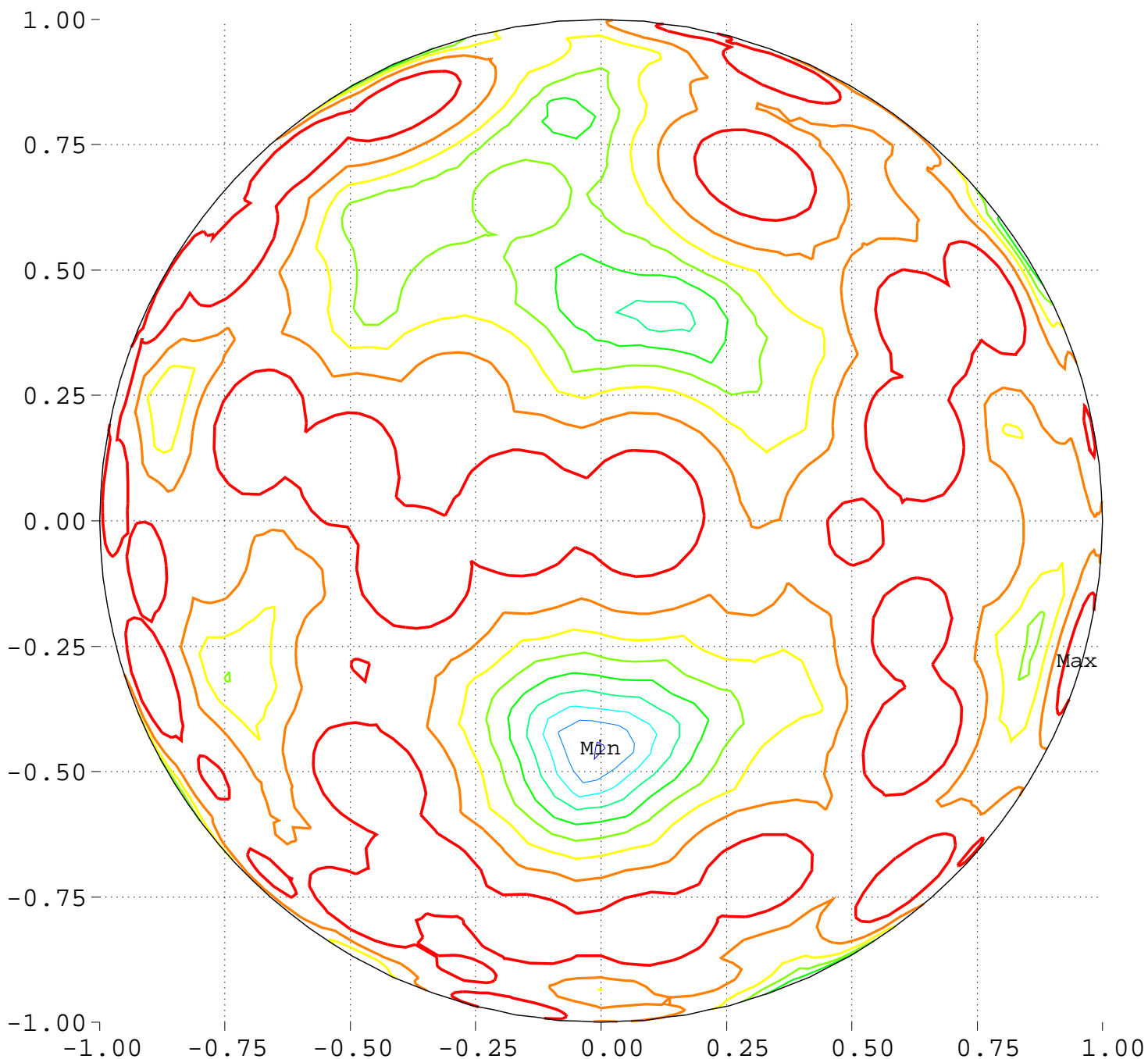
Minimum = 0.00      Maximum = 100.00

Contours around Nadirs of Sources



Minimize Maximum Intensity for 16 Sources  
Highest Intensity: 4.083985

North Pole, 0 Deg = Right, 90 Deg = Top



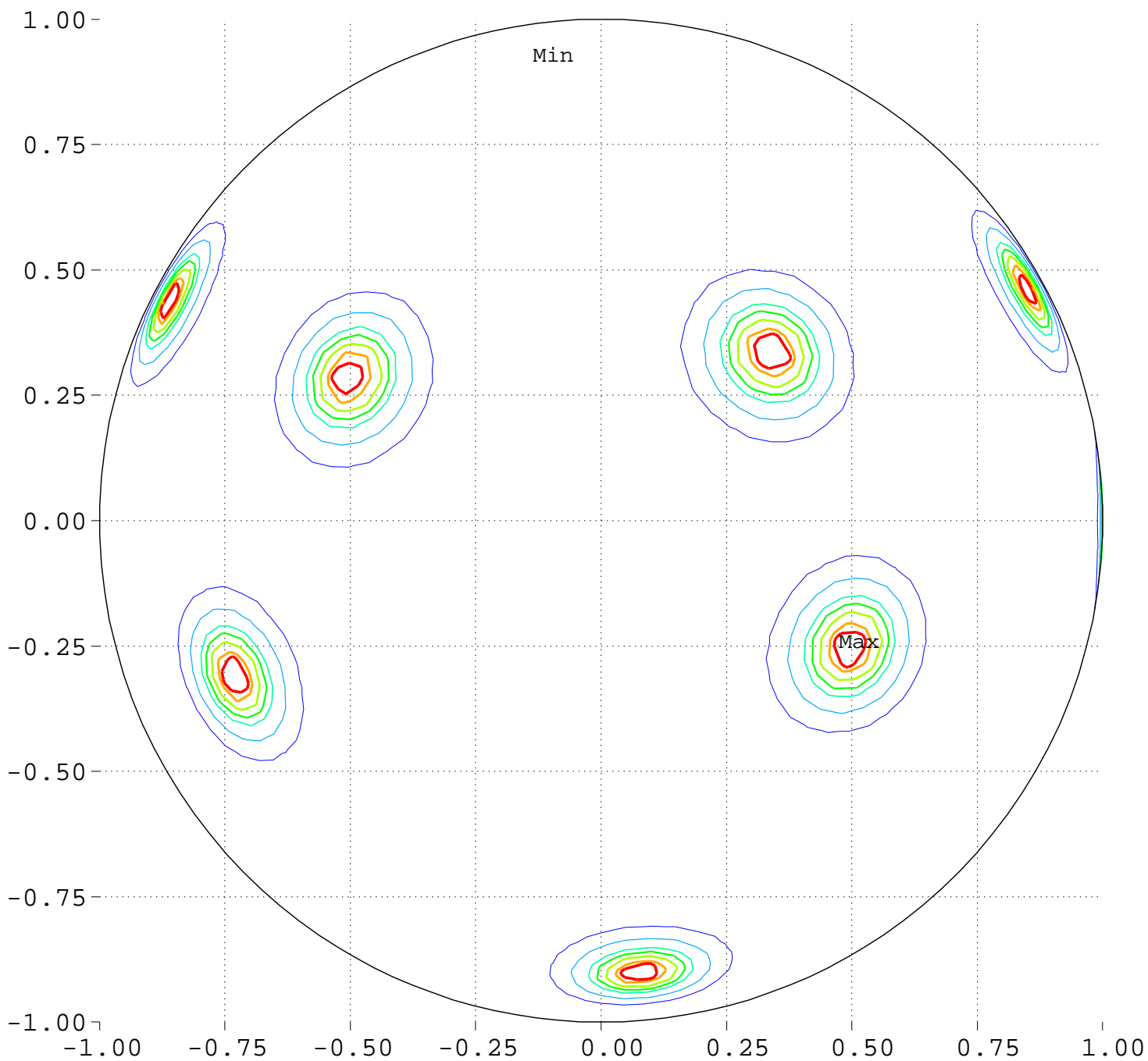
Minimum = 91.09      Maximum = 102.09

Contour Levels of Scaled Intensity

<u>91.2500</u>	<u>92.5000</u>	<u>93.7500</u>	<u>95.0000</u>	<u>96.2500</u>
<u>97.5000</u>	<u>98.7500</u>	<u>100.0000</u>	<u>101.2500</u>	

# Minimize Maximum Intensity for 16 Sources Source Locations

South Pole, 0 Deg = Right, 270 Deg = Top



Minimum = 0.00      Maximum = 100.00

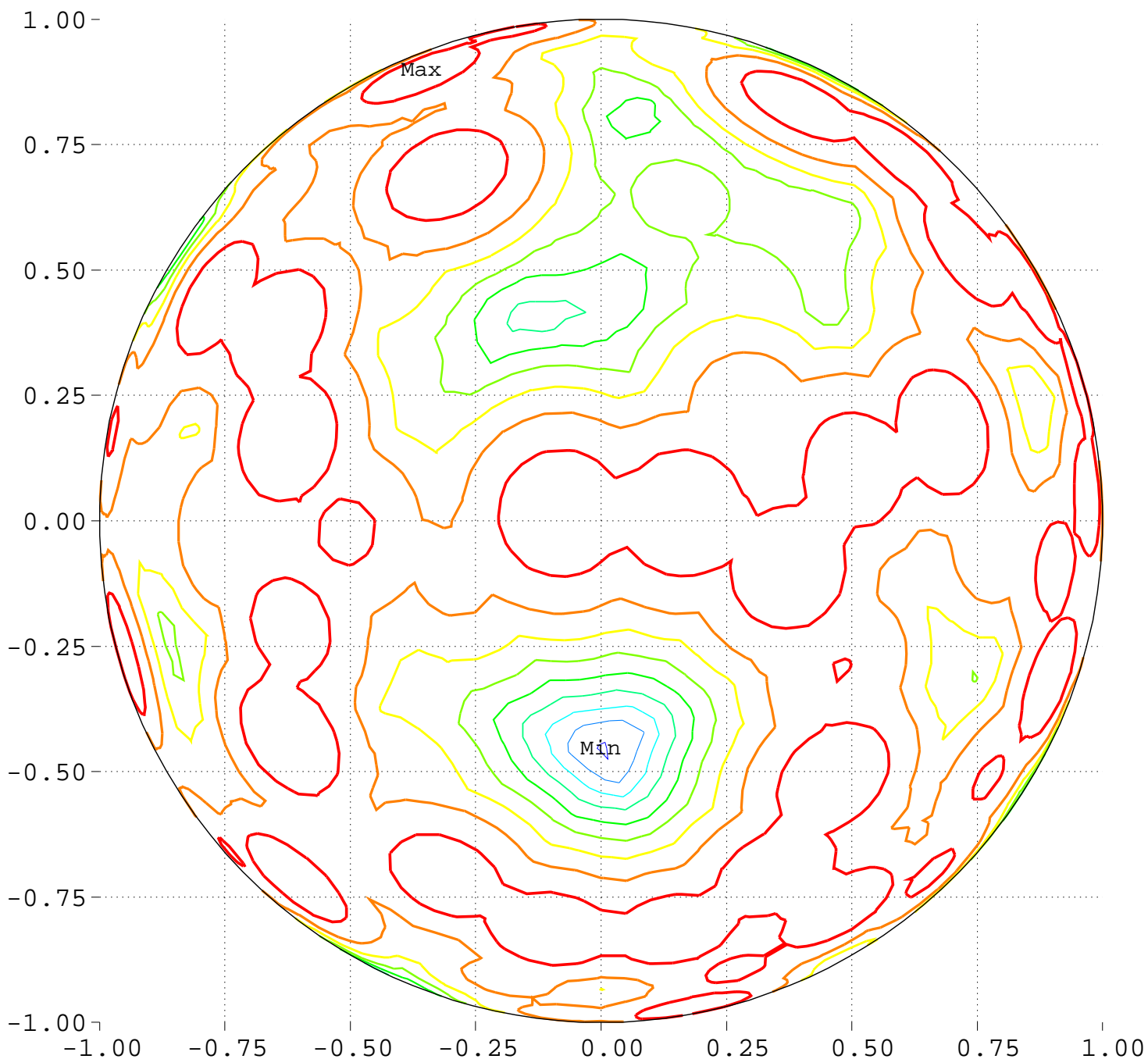
Contours around Nadirs of Sources

20.0000    40.0000    60.0000    70.0000    80.0000  
90.0000    95.0000

# Minimize Maximum Intensity for 16 Sources

Highest Intensity: 4.083985

South Pole, 0 Deg = Right, 270 Deg = Top



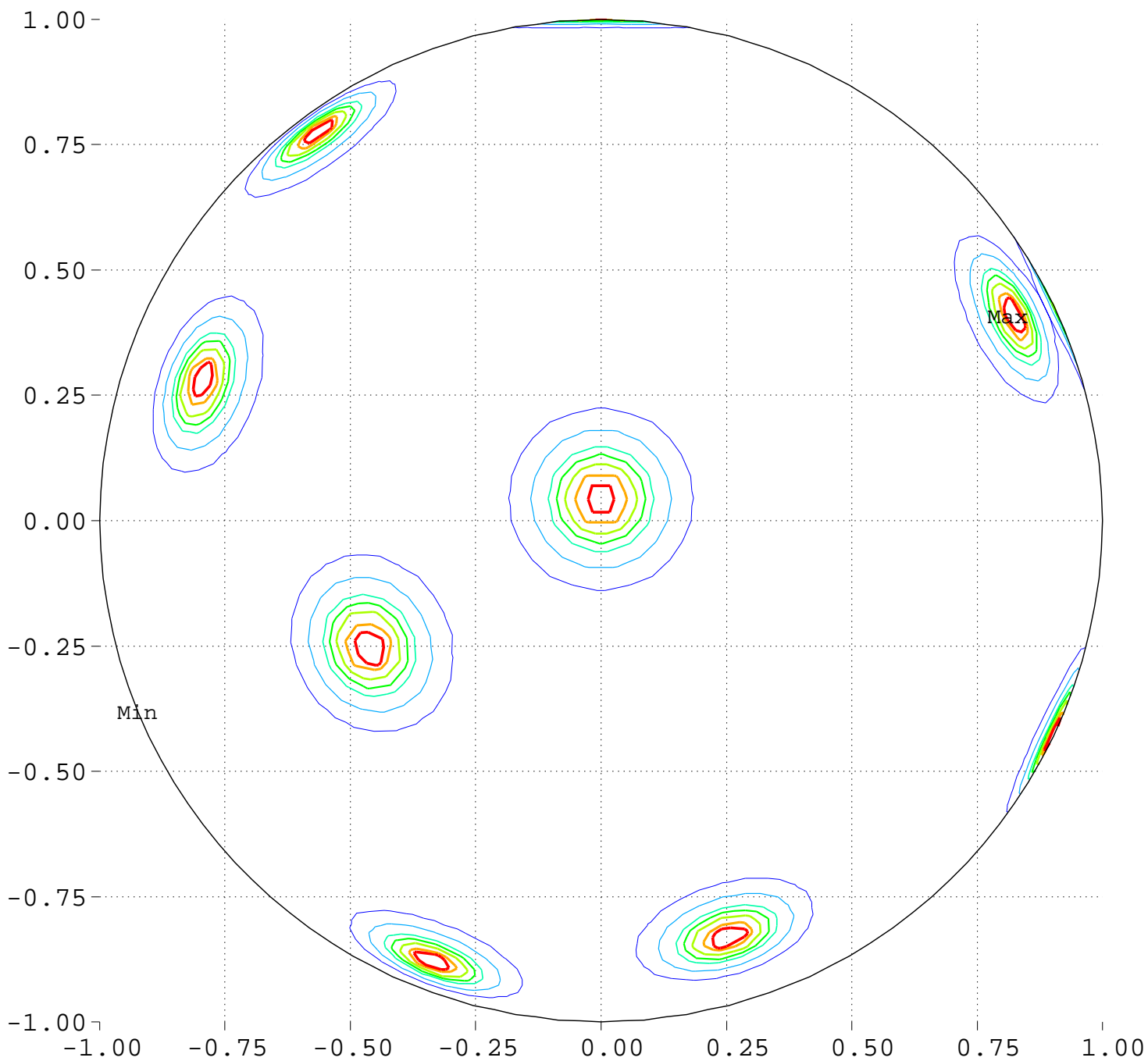
Minimum = 91.09      Maximum = 102.09

Contour Levels of Scaled Intensity

<u>91.2500</u>	<u>92.5000</u>	<u>93.7500</u>	<u>95.0000</u>	<u>96.2500</u>
<u>97.5000</u>	<u>98.7500</u>	<u>100.0000</u>	<u>101.2500</u>	

# Minimize Maximum Intensity for 16 Sources Source Locations

Equator View, Longitude 0 Deg



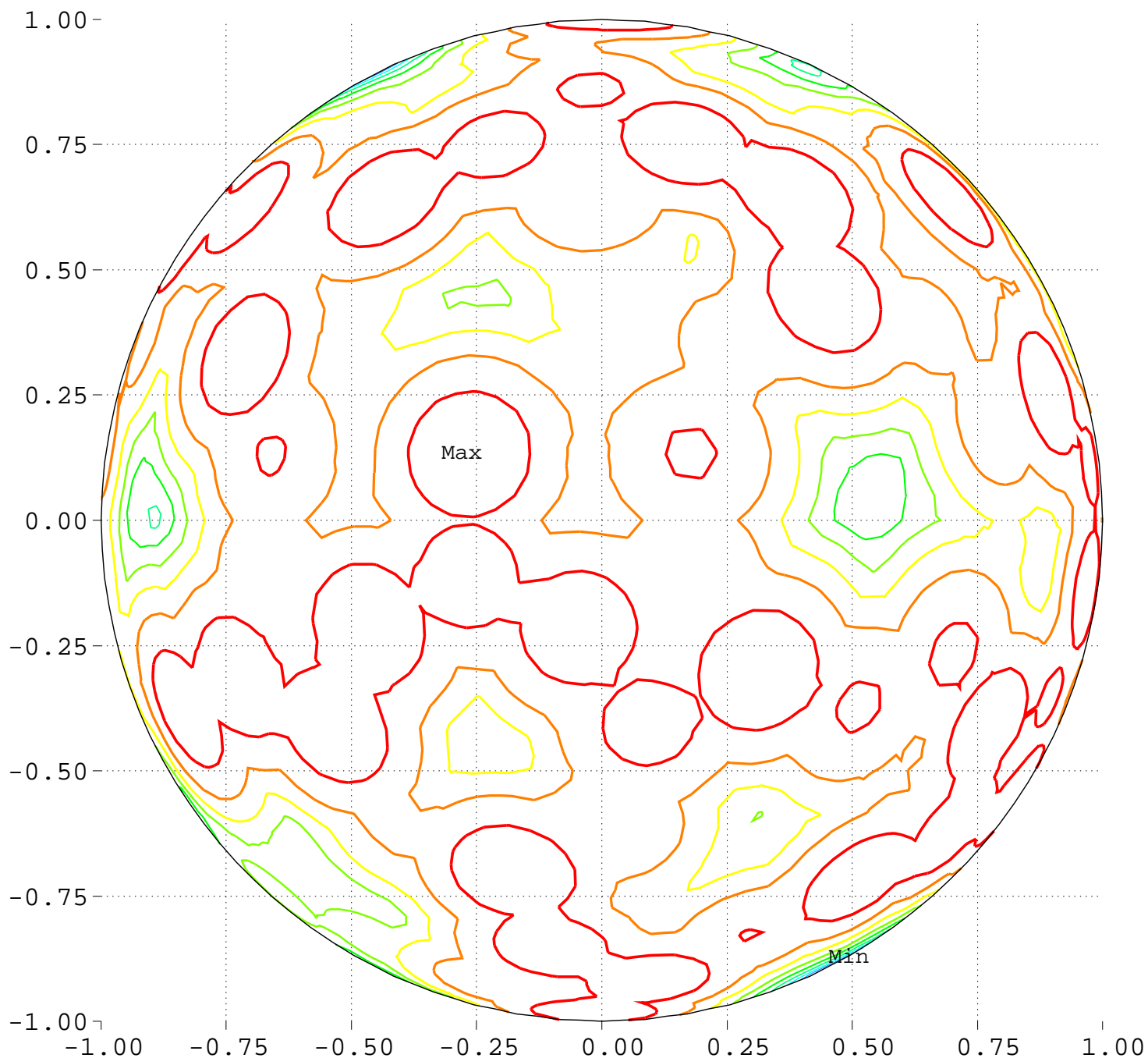
Minimum = 0.00      Maximum = 100.00

Contours around Nadirs of Sources



Minimize Maximum Intensity for 16 Sources  
Highest Intensity: 4.083985

Equator View, Longitude 0 Deg



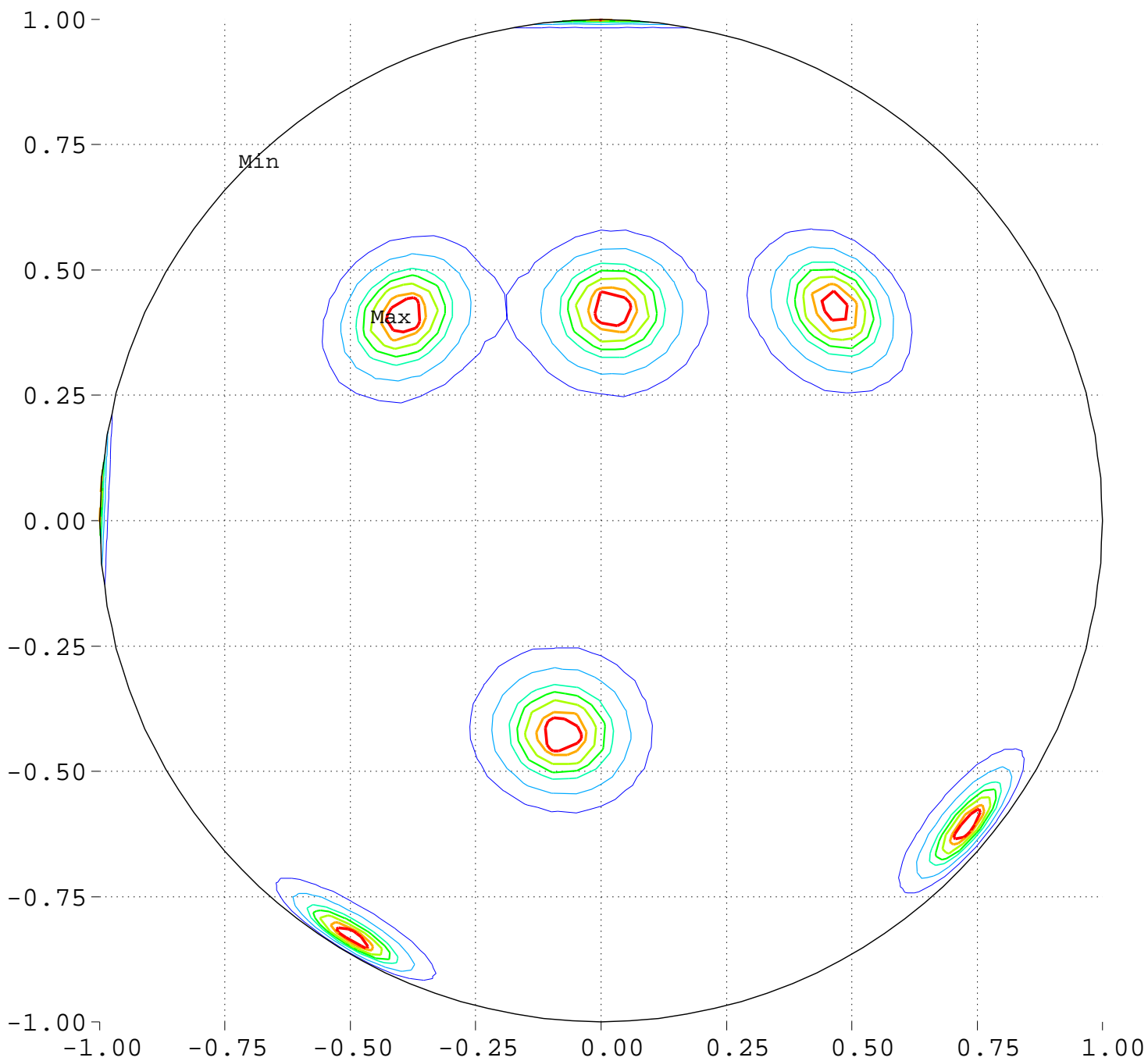
Minimum = 91.39      Maximum = 102.09

Contour Levels of Scaled Intensity

<u>91.2500</u>	<u>92.5000</u>	<u>93.7500</u>	<u>95.0000</u>	<u>96.2500</u>
<u>97.5000</u>	<u>98.7500</u>	<u>100.0000</u>	<u>101.2500</u>	

# Minimize Maximum Intensity for 16 Sources Source Locations

Equator View, Longitude 90 Deg



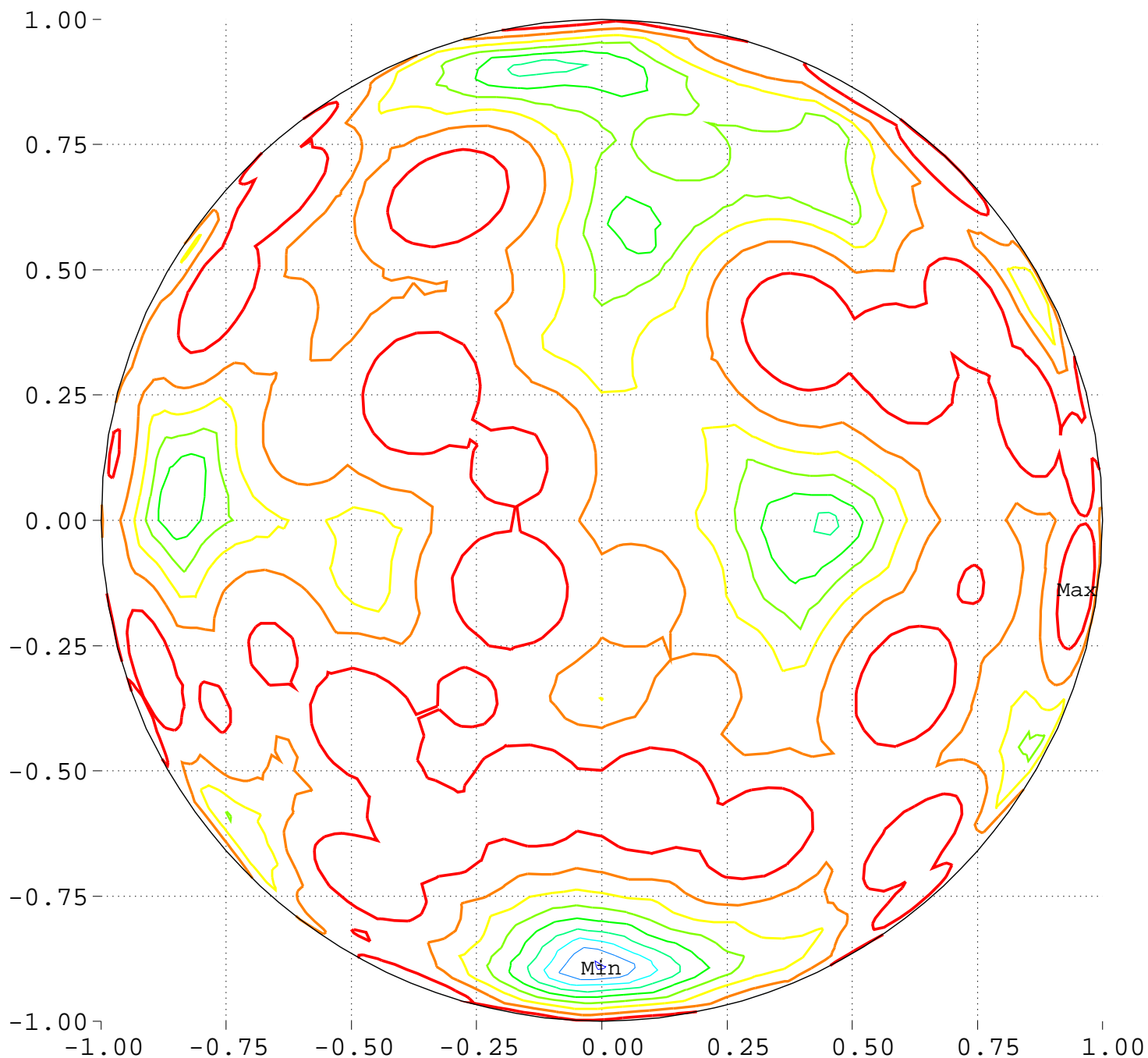
Minimum = 0.00      Maximum = 100.00

Contours around Nadirs of Sources



Minimize Maximum Intensity for 16 Sources  
Highest Intensity: 4.083985

Equator View, Longitude 90 Deg



Minimum = 91.09      Maximum = 102.09

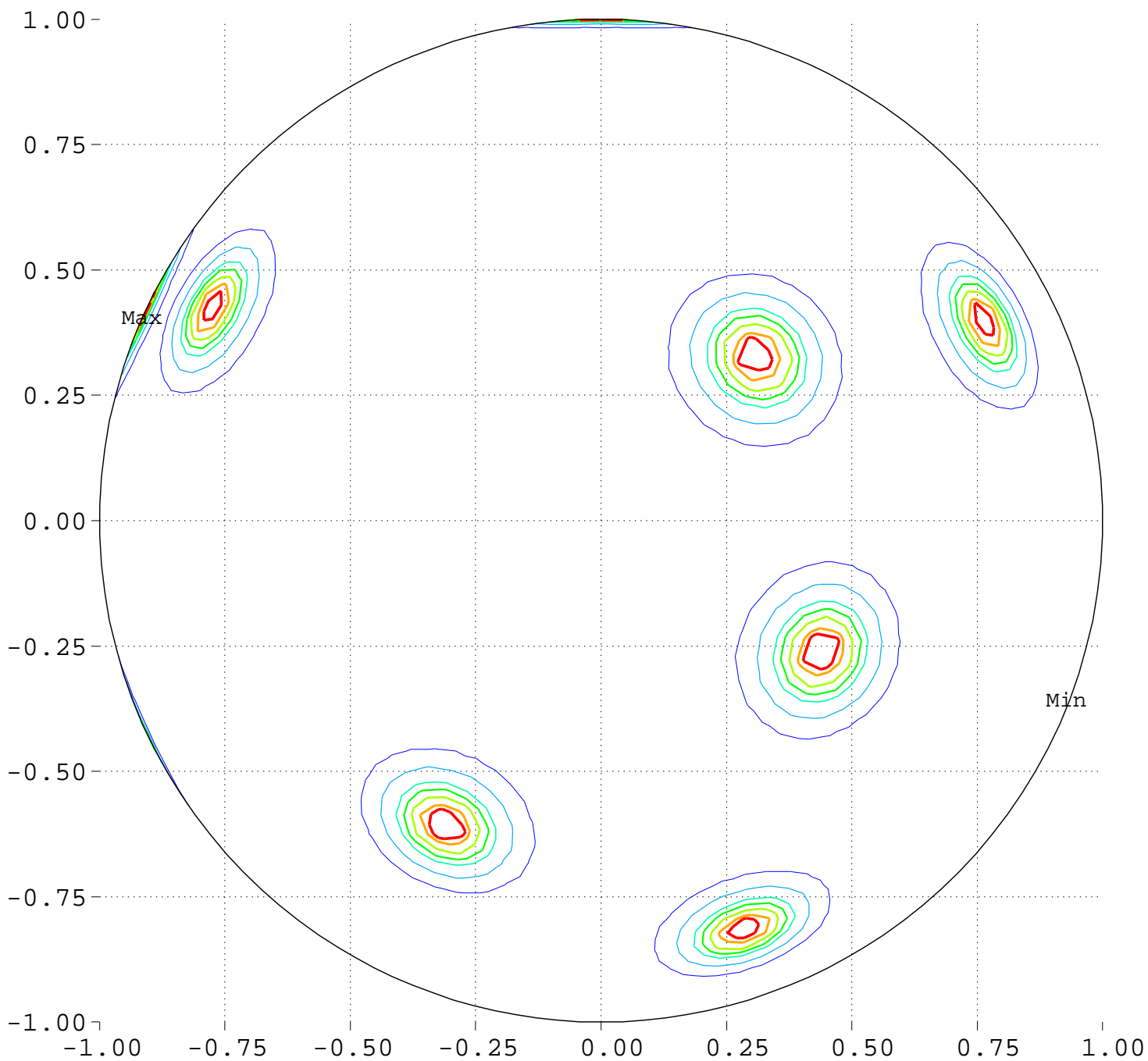
Contour Levels of Scaled Intensity

<u>91.2500</u>	<u>92.5000</u>	<u>93.7500</u>	<u>95.0000</u>	<u>96.2500</u>
<u>97.5000</u>	<u>98.7500</u>	<u>100.0000</u>	<u>101.2500</u>	



# Minimize Maximum Intensity for 16 Sources Source Locations

Equator View, Longitude 180 Deg



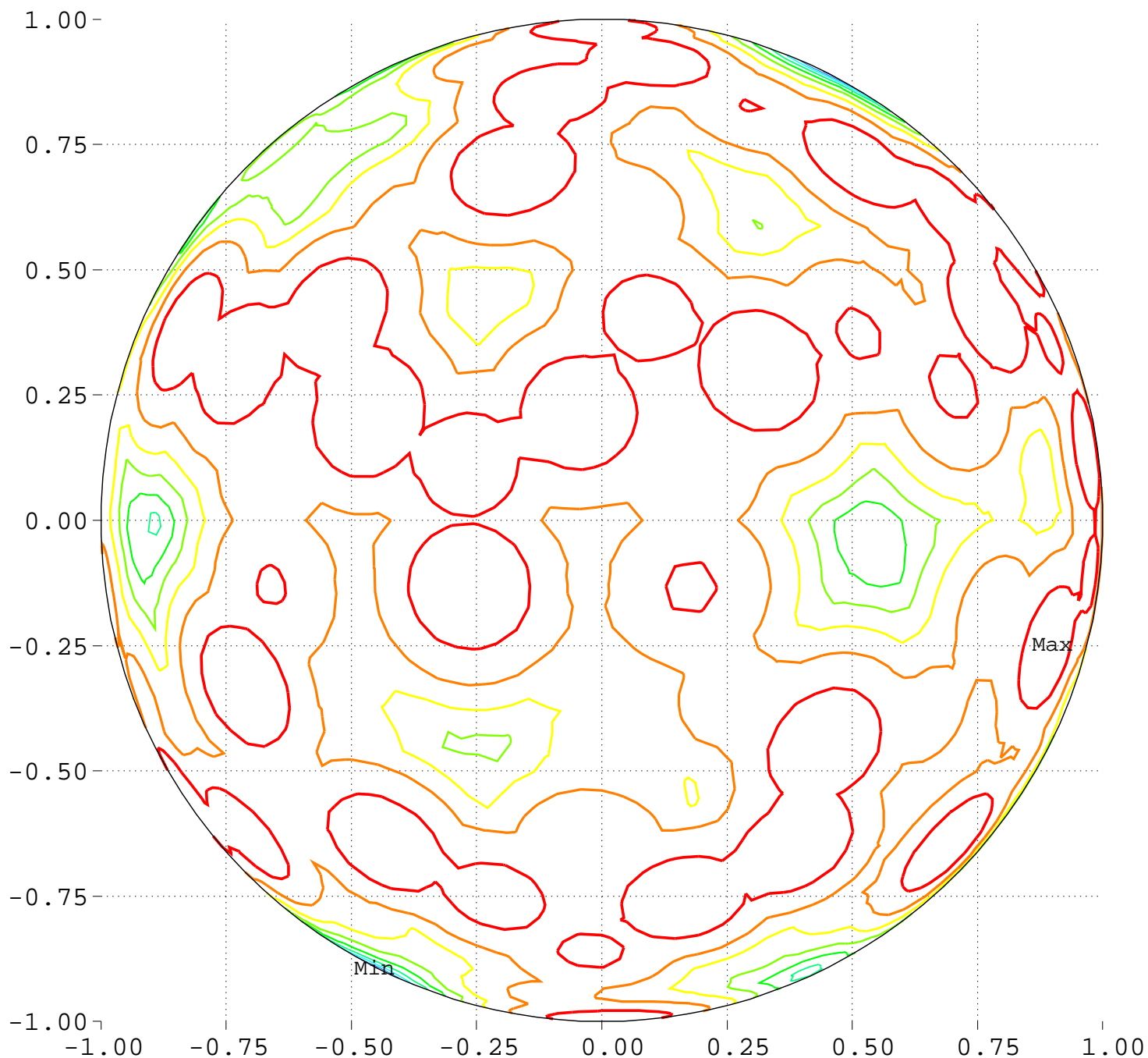
Minimum = 0.00      Maximum = 100.00

Contours around Nadirs of Sources



Minimize Maximum Intensity for 16 Sources  
Highest Intensity: 4.083985

Equator View, Longitude 180 Deg



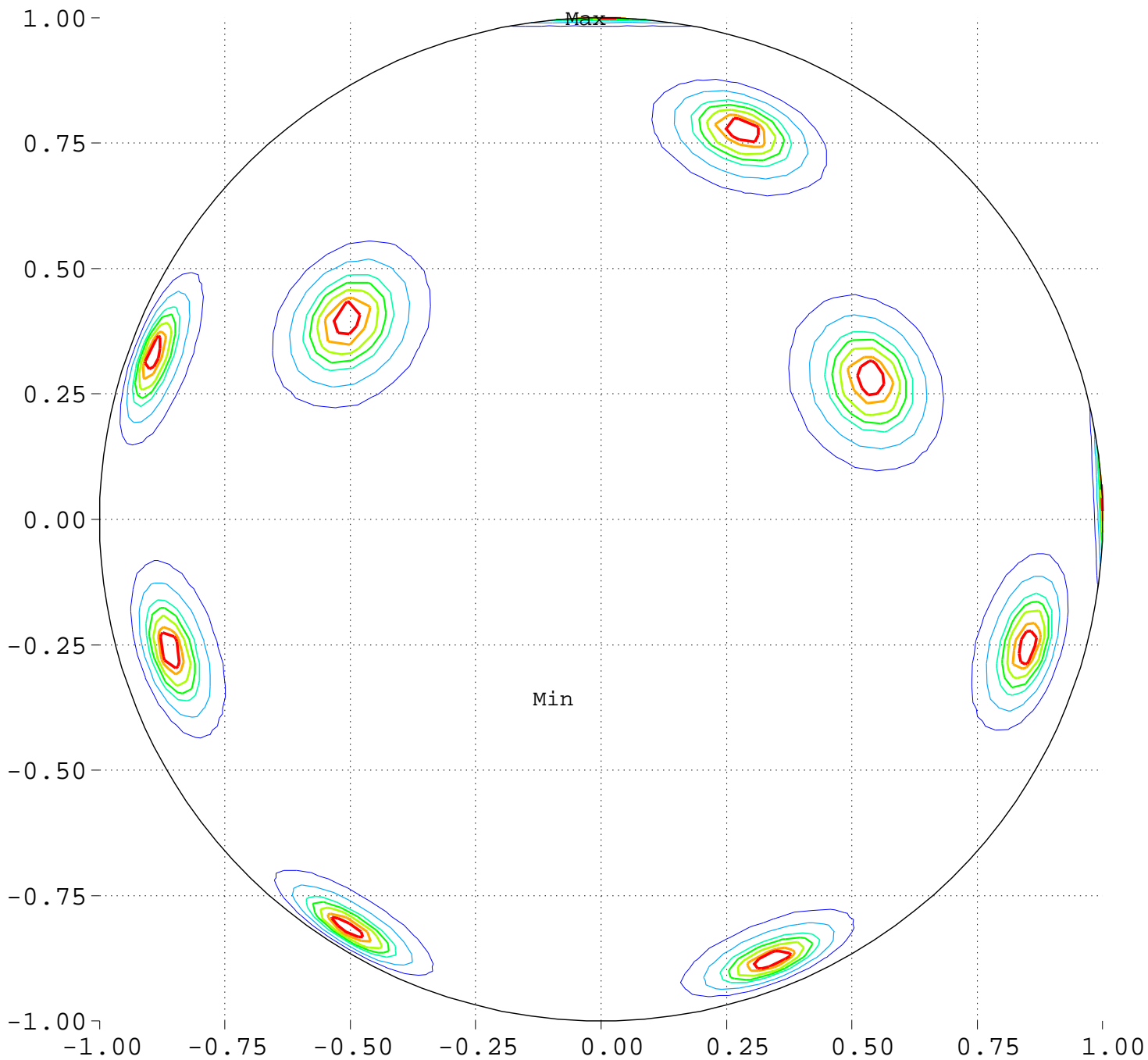
Minimum = 91.09      Maximum = 102.09

Contour Levels of Scaled Intensity

<u>91.2500</u>	<u>92.5000</u>	<u>93.7500</u>	<u>95.0000</u>	<u>96.2500</u>
<u>97.5000</u>	<u>98.7500</u>	<u>100.0000</u>	<u>101.2500</u>	

# Minimize Maximum Intensity for 16 Sources Source Locations

Equator View, Longitude 270 Deg



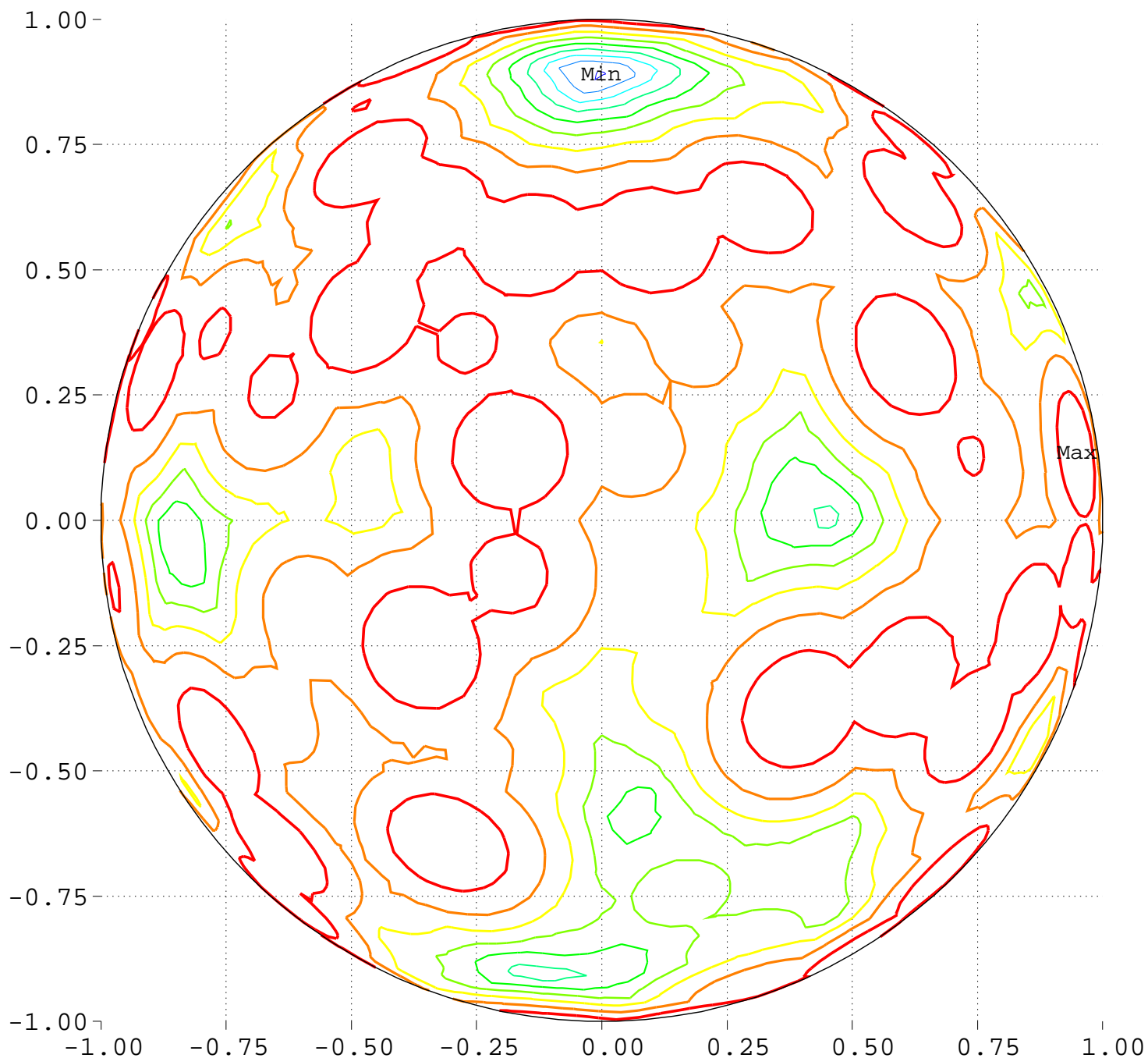
Minimum = 0.00      Maximum = 100.00

Contours around Nadirs of Sources



Minimize Maximum Intensity for 16 Sources  
Highest Intensity: 4.083985

Equator View, Longitude 270 Deg



Minimum = 91.09      Maximum = 102.09

Contour Levels of Scaled Intensity

<u>91.2500</u>	<u>92.5000</u>	<u>93.7500</u>	<u>95.0000</u>	<u>96.2500</u>
<u>97.5000</u>	<u>98.7500</u>	<u>100.0000</u>	<u>101.2500</u>	